

PRO-EDGE

**“Pros Serving Pros” FOR 30 PLUS YEARS
Since 1992
Catalog Revision 18.8**

**EFFECTIVE:
SEPTEMBER 1, 2023**

ALL PRODUCT LISTINGS



**Pro-Edge Industries, Inc.
13168 Flores Street
Santa Fe Springs, CA 90670**

**Tel: (562) 906-0626
Order Toll Free: (800) 455-0032
Fax: (562) 906-0958
Email: proedgeind@yahoo.com
www.proedgeind.com**

Terms and Conditions of Sale

Freight: All shipments are F.O.B. Santa Fe Springs, CA. Freight is prepaid at a \$1200 minimum for one location within the state of California. Freight is also prepaid at a \$1500 minimum for any state outside of California. **ORDERS WITH LONG HANDLED TOOLS (Shovels, Digging Bars, Fiberglass probes, Landscape Rakes) are prepaid at a \$2500 minimum for any state outside of California.** Shipments to Alaska, the Hawaii Islands, Puerto Rico and Canada will be subjected to additional freight charges.

Terms: Standard terms are **Net 30 days** from the date of the invoice with credit approval. 1.5% service charge per month on past due accounts. New accounts are C.O.D. until credit is approved.

Warranty: All Tools are warranted for Lifetime against any defect in material and workmanship. Cutting tools and abrasives are not warranted against normal wear. All defective merchandise must be returned freight prepaid. We will repair or replace parts if accompanied by proof of purchase.

Returns: Return merchandise will not be accepted without return authorization number. A minimum 15% handling charge will be charged for returned items.

Shortage or Damage: All products are sold F.O.B. shipping point. In case of any shortage or damage, notify at once the delivery freight carrier and file claim promptly with carrier. Although our responsibility for product ends upon receipt by freight carrier, when requested we will assist in the filing of claims for unusual losses if we receive information within 10 days from invoice date.

Order minimum: \$50 order minimum. If \$50 total is not met, a \$3 handling charge will apply.

Prices: Prices are subject to change without notice.

WARNING: Any cutting tool can shatter and break during use. Always wear safety eye glasses at all times in the vicinity of their use. Caution should always be taken when handling cutting tools to avoid injury.

BRANDS WE CARRY INCLUDE:



TEKNORAPEX



TABLE OF CONTENTS

ADHESIVES & TAPES

| | |
|---------------------------------------|---|
| SHOP USE | 1 |
| WARNING TAPES, DETECTABLE TAPES | 1 |
| DUCT TAPES | 1 |
| ELECTRICAL TAPES | 2 |
| PIPE WRAP TAPES | 2 |
| SHRINK WRAPS | 2 |
| VINYL, FOIL, PLUMBERS TAPES | 2 |
| FILAMENT TAPES | 3 |
| MASKING TAPES | 3 |
| PVC PIPE CEMENTS | 3 |

HAND TOOLS

| | |
|---|---------|
| CHANNELLOCK™ | 4,5,6,7 |
| NUT DRIVERS | 6 |
| SCREWDRIVERS & WRENCHES | 7 |
| BOLT CUTTERS | 7 |
| TIN SNIPS, HEX KEY SETS, TOWELS | 8 |
| HAMMERS | 8 |
| ORGANIZER BOX, LEVELS, & UTILITY KNIVES | 9 |
| PUTTY KNIVES, BRUSH, HAND SAWS | 10 |
| BAHCO TOOLS | 10 |
| MEASURING TAPES & ANCHOR KITS | 11 |
| FLAT FILES & CAULKING GUNS | 12 |

GLOVES

| | |
|-------------------------------------|----|
| COTTON GLOVES | 13 |
| ATLAS® GLOVES | 13 |
| BLUE FLEX GLOVES | 13 |
| IRONCLAD BRANDED GLOVES | 14 |
| DISPOSABLE GLOVES | 14 |
| LEATHER PALM WORK GLOVES | 14 |
| “UGLY” PVC CHIP COATED GLOVES | 14 |
| LEATHER DRIVER’S GLOVES | 15 |
| TRADESMEN GLOVES | 15 |

LAWN & GARDEN

| | |
|--|----|
| WATER HOSES | 16 |
| DIGGING BARS | 16 |
| LANDSCAPE FABRICS | 17 |
| MATTOCK PARTS | 17 |
| RAKES, BROOM, FILTER DRAIN SOCKS | 18 |
| TRASH BAGS, TURF KNIFE | 18 |
| FIBERGLASS PROBE | 19 |
| SOD KNIFE | 19 |
| SHOVELS | 19 |

ELECTRICAL

| | |
|---------------------------|----|
| BATTERIES | 20 |
| WIRE NUTS | 20 |
| CABLE TIES | 20 |
| DROP LIGHTS | 21 |
| EXTENSION CORDS | 21 |
| ELECTRICAL ADAPTERS | 21 |

SAFETY & WEATHER

| | |
|--|----|
| BELTS, KNEE PADS, VESTS, & HARD HATS | 22 |
| SAFETY GLASSES, DUST MASKS | 23 |
| NEOMASK, WD40, FIRST AID KITS | 23 |
| RAINSUITS, RAIN BOOTS | 24 |
| SILVER TARPS | 24 |
| BLUE TARPS, MESH TARPS | 25 |
| POLY. SHOE COVERS | 25 |
| RATCHET STRAPS, BUCKLE STRAPS | 26 |
| RUBBER TARP STRAPS, SEINE TWINE | 26 |
| TRUCK ROPES | 27 |
| MARKING PAINT, SPRAY PAINT | 27 |
| CRAWLSUIT, EARPLUG | 28 |
| LUMBER CRAYONS, SPONGE, PUMP | 28 |

PLUMBING

| | |
|------------------------------------|----|
| HOSE CLAMPS | 29 |
| PVC PIPE CUTTERS, CABLE SAW | 29 |
| TEST GAUGES, METER KEY | 30 |
| SILLCOCK KEY, SPRAY BOTTLE | 31 |
| PIPE TAPS, SCREW EXTRACTORS | 31 |
| TUBING CUTTER, PIPE WRENCHES | 32 |

CUTTING TOOLS

| | |
|--------------------------------------|-------|
| HOLE SAWS | 33,34 |
| HOLE SAW ACCESSORIES, ARBORS | 34 |
| HOLE SAW SETS | 35 |
| RECESSED LIGHT HOLE SAWS | 35 |
| DIAMOND BLADES | 36 |
| ABRASIVE CUTOFF WHEELS | 36 |
| CIRCULAR SAW BLADES | 36 |
| PORTABAND BLADES, LENOX | 37 |
| HACKSAW FRAMES | 37 |
| MASONRY DRILL BITS | 38 |
| ROTARY HAMMER SDS+ DRILL BITS | 39 |
| AUGER DRILL BITS | 40 |
| SPADE FLAT PADDLE DRILL BITS | 41 |
| SELF FEED DRILL BITS | 42 |
| SILVER & DEMING DRILL BITS | 42 |
| JOBBER LENGTH TWIST DRILL BITS | 43 |
| RECIPROCATING SAW BLADES | 44 |
| CARBIDE GRIT SAW BLADES | 45 |
| HACKSAW BLADES, STEP DRILLS | 45 |
| THIN WALL HOLE SAWS | 46 |
| CARBIDE TIPPED HOLE CUTTERS | 46 |

SCREWDRIVING BITS

| | |
|---------------------------------------|----|
| PHILLIPS, SQUARE INSERT BITS | 47 |
| INSERT BITS JAR, ALD INSERT BIT | 47 |
| STAR INSERT BITS | 48 |
| SLOTTED, SPANNER INSERT BITS | 49 |
| HEX ALLEN & “DIMPLE” INSERTS | 49 |
| MAGNETIC NUT SETTERS | 50 |
| POSIDRIV INSERT BITS | 51 |
| MAGNETIC BIT HOLDERS | 51 |

ADHESIVES & TAPES

SHOP USE

- Heavy Duty packaging materials

| PART # | DESCRIPTION | QTY PER case |
|---------|---|--------------|
| 83-5700 | 2" x 55 YD. CLEAR SEALING TAPE | 36 |
| 83-5750 | 2" x 55 YD. TAN SEALING TAPE | 36 |
| 83-5800 | 2" x 110 YD. CLEAR SEALING TAPE (1.8MIL) | 36 |
| 83-5830 | 2" x 110 YD. CLEAR SEALING TAPE (2.5MIL) | 36 |
| 83-2240 | 5" x 6", 2 mil Clear Ziplock Bags (Priced per 100) | 1000 |
| 83-2220 | 8" x 10", 2 mil Clear Ziplock Bags (Priced per 100) | 1000 |
| 83-2230 | 10" x 13", 2 mil Clear Ziplock Bags (Priced per 100) | 1000 |
| 83-2210 | 10" x 13", 4 mil Clear Ziplock Bags (Priced per 50) | 1000 |



ZIPLOCK BAGS

WARNING TAPES

- Yellow/Red background with black lettering. 2MIL thick tape

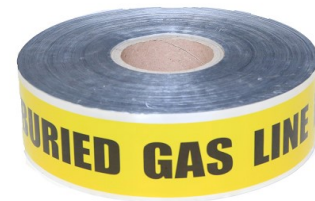
| PART # | SIZE | Rolls Per Case |
|---------|-----------------------|----------------|
| 83-5500 | 3" x 300' "CAUTION" | 48 |
| 83-5600 | 3" x 1000' "CAUTION" | 12 |
| 83-5530 | 3"x300' RED "DANGER" | 48 |
| 83-5560 | 3"x1000' RED "DANGER" | 12 |



UNDERGROUND DETECTABLE TAPES

- 5MIL thick non-adhesive tape made for locating buried utility lines
- APWA color coded. Case quantity is 4 rolls

| PART # | SIZE | UTILITY DETECTED |
|---------|------------|--------------------------|
| 83-5620 | 3" x 1000' | WATER (BLUE) |
| 83-5640 | 3" x 1000' | GAS (YELLOW) |
| 83-5660 | 3" x 1000' | ELECTRIC (RED) |
| 83-5680 | 3" x 1000' | SEWER (GREEN) |
| 83-5690 | 3" x 1000' | RECLAIMED WATER (PURPLE) |



****CASE Quantity: 4 ROLLS**

CLOTH DUCT TAPES

- Strong Rubber adhesive and cloth backing
- Sticks well to all surfaces. Twisting and curling is minimized

| PART # | SIZE | THICKNESS | COLOR | Rolls Per Case |
|---------|----------------------------|-----------|--------|----------------|
| 83-2420 | 2" x 60 YD. | 8MIL | SILVER | 24 |
| 83-2480 | 2" x 60 YD. | 9MIL | SILVER | 24 |
| 83-2700 | 2" x 60 YD. | 9MIL | BLACK | 24 |
| 83-2800 | 2" x 60 YD. | 9MIL | BLUE | 24 |
| 83-2900 | 2" x 60 YD. | 9MIL | GREEN | 24 |
| 83-3000 | 2" x 60 YD. | 9MIL | RED | 24 |
| 83-3100 | 2" x 60 YD. | 9MIL | WHITE | 24 |
| 83-3200 | 2" x 60 YD. | 9MIL | YELLOW | 24 |
| 83-2500 | 2" x 60 YD. | 10MIL | RED | 24 |
| 83-3400 | 2" x 60 YD. (#622) | 12MIL | RED | 24 |
| 83-3420 | 1-1/2" x 60 YD. (#622) | 12MIL | RED | 32 |
| 83-3300 | 2" x 60YD. (Code Approved) | 12MIL | SILVER | 24 |



ADHESIVES & TAPES

ELECTRICAL TAPES

- 7MIL UL Rated tape. Perfect for joining wires, cables, and electrical insulation. SOLD in a sleeve of 10 rolls

| PART # | LENGTH(FT.) | WIDTH(IN.) | COLOR |
|---------|-------------|------------|--------|
| 83-4300 | 60' | 3/4" | BLACK |
| 83-4302 | 60' | 3/4" | WHITE |
| 83-4304 | 60' | 3/4" | RED |
| 83-4306 | 60' | 3/4" | BLUE |
| 83-4308 | 60' | 3/4" | YELLOW |
| 83-4312 | 60' | 3/4" | GREEN |
| 83-4314 | 60' | 3/4" | ORANGE |
| 83-4316 | 60' | 3/4" | BROWN |



****CASE Quantity: 100 ROLLS**

PIPE WRAP TAPES

- UV resistant, waterproof PVC pipe wrap tape

| PART # | CASE Quantity | WIDTH(IN.) | LENGTH(FT.) | THICKNESS |
|---------|---------------|------------|-------------|-----------|
| 83-3500 | 48 rolls | 1" | 100 | 10 mil |
| 83-3700 | 36 rolls | 2" | 100 | 10 mil |
| 83-3800 | 24 rolls | 2" | 100 | 20 mil |
| 83-3900 | 18 rolls | 4" | 100 | 10 mil |



RED POLY VINYL TAPES

- Perfect for masking surfaces when painting and applying stucco
- Polyethylene film with a synthetic adhesive backing which allows the tape to be waterproof and has clean removal

| PART # | DESCRIPTION |
|---------|--|
| 83-4100 | 2" x 60 YD. RED POLY TAPE (UV RESISTANT) |
| 83-4110 | 2" x 60YD. RED POLY TAPE #PE333 (NON-UV RESISTANT) |
| 83-4140 | 2" x 60YD. RED POLY TAPE #PE444 (UV RESISTANT) |



****CASE Quantity: 24 ROLLS**

SPECIALTY TAPES

- Aluminum FOIL Tape has a rubber adhesive for patching A/C ventilation ducts
- METAL Plumbers Tape HAS Galvanized steel for extra holding strength

| PART # | DESCRIPTION | CASE Quantity |
|---------|-------------------------------|---------------|
| 83-4200 | 2" x 50 YD. SILVER FOIL TAPE | 24 rolls |
| 83-4380 | 22 GAUGE METAL PLUMBER'S TAPE | 100 rolls |



METAL PLUMBERS TAPE

SHRINK WRAPS

- Heavy Duty clear wrap allows easy scanning of barcodes in a pallet

| PART # | DESCRIPTION |
|---------|---|
| 83-6200 | 18" x 1500' 80 GAUGE WRAP |
| 83-6300 | 20" x 1000' 80 GAUGE WRAP with EXTENDED CORE HANDLE |



****CASE Quantity: 4 ROLLS**

ADHESIVES & TAPES

FILAMENT TAPES

- Fiberglass reinforced strapping tape that is shock and water resistant



| PART # | SIZE | CASE Quantity |
|---------|---------------|---------------|
| 83-6000 | 3/4" x 60 YD. | 48 rolls |
| 83-6100 | 1" x 60 YD. | 36 rolls |

MASKING TAPES

- Utility Grade paper masking tape
- BLUE** Painters masking tape has no residue removal
- High adhesion & quick stick adhesive backing

| PART # | SIZE | CASE Quantity |
|---------|--------------------------------|---------------|
| 83-4400 | 1" x 60YD. NATURAL MASKING | 36 rolls |
| 83-4500 | 1-1/2" x 60YD. NATURAL MASKING | 24 rolls |
| 83-4600 | 2" x 60YD. NATURAL MASKING | 24 rolls |
| 83-4700 | 1" x 60YD. BLUE MASKING | 36 rolls |
| 83-4800 | 1-1/2" x 60YD. BLUE MASKING | 24 rolls |
| 83-4900 | 2" x 60YD. BLUE MASKING | 24 rolls |



PTFE THREAD SEAL TAPES

- Seals pipe threads to prevent leakage and dripping in pipes
- 0.35 g/cm³ density for standard tapes. 0.8 g/cm³ density for high density tapes**

| PART # | SIZE | CASE Quantity |
|----------|---|---------------|
| 83-5450 | 1/2" x 260" PTFE THREAD SEAL TAPE | 500 rolls |
| 83-5000 | 1/2" x 520" PTFE THREAD SEAL TAPE | 500 rolls |
| 83-5040 | 3/4" x 260" PTFE THREAD SEAL TAPE | 350 rolls |
| 83-5100 | 3/4" x 520" PTFE THREAD SEAL TAPE | 350 rolls |
| 83-5130 | 1" x 260" PTFE THREAD SEAL TAPE | 250 rolls |
| 83-5200 | 1" x 520" PTFE THREAD SEAL TAPE | 250 rolls |
| 83-5300 | 1/2" x 260" YELLOW GAS PTFE THREAD SEAL TAPE | 500 rolls |
| 83-5400 | 1/2" x 260" PINK PTFE THREAD SEAL TAPE | 500 rolls |
| 83-5312P | High Density 1/2" x 520" PTFE THREAD SEAL TAPE | 500 rolls |
| 83-5334P | High Density 3/4" x 520" PTFE THREAD SEAL TEFLON TAPE | 350 rolls |



High Density TEFLON



PVC PIPE CEMENTS

- Seals various types of pipes and fittings by creating a solvent weld
- All cans come with an applying brush. Quick Drying Time formula

| PART # | SIZE | DESCRIPTION | CASE Qty. |
|----------|--------|------------------|-----------|
| 12-15806 | 8 OZ. | MEGALOC SEALANT | 24 cans |
| 12-15808 | 16 OZ. | MEGALOC SEALANT | 24 cans |
| 12-30755 | 4 OZ. | PURPLE PRIMER | 24 cans |
| 12-30756 | 8 OZ. | PURPLE PRIMER | 24 cans |
| 12-30757 | 16 OZ. | PURPLE PRIMER | 24 cans |
| 12-30758 | 32 OZ. | PURPLE PRIMER | 12 cans |
| 12-31018 | 8 OZ. | CLEAR PVC CEMENT | 24 cans |
| 12-31019 | 16 OZ. | CLEAR PVC CEMENT | 24 cans |
| 12-31020 | 32 OZ. | CLEAR PVC CEMENT | 12 cans |



| PART # | SIZE | DESCRIPTION | CASE Qty. |
|----------|--------|----------------------|-----------|
| 12-32160 | 4 OZ. | BLUE LAVA HOT CEMENT | 24 cans |
| 12-32161 | 8 OZ. | BLUE LAVA HOT CEMENT | 24 cans |
| 12-32162 | 16 OZ. | BLUE LAVA HOT CEMENT | 24 cans |
| 12-32163 | 32 OZ. | BLUE LAVA HOT CEMENT | 12 cans |

HAND TOOLS



| PART # | DESCRIPTION | CASE Quantity |
|----------|--|---------------|
| 82-8WCB | CHANNELLOCK 8" WIDE MOUTH ADJUSTABLE WRENCH (#8WCB) | 20 |
| 82-326 | CHANNELLOCK 6" LONG NOSE PLIER W/SIDE CUTTER (#326) | 20 |
| 82-348E | CHANNELLOCK 8" HIGH LEVERAGE COMBINATION PLIER (#E348) | 20 |
| 82-368 | CHANNELLOCK 8.5" ROUND NOSE LINESMEN'S PLIER (#368) | 20 |
| 82-369 | CHANNELLOCK 9.5" ROUND NOSE LINESMEN'S PLIER (#369) | 20 |
| 82-5600 | CHANNELLOCK 10" SMOOTH JAW TONGUE & GROOVE PLIER (#415G) | 20 |
| 82-5700 | CHANNELLOCK 9-1/2" STANDARD TONGUE & GROOVE PLIER (#420G) | 20 |
| 82-5800 | CHANNELLOCK 9-1/2" CURVED TONGUE & GROOVE PLIER (#422G) | 20 |
| 82-5900 | CHANNELLOCK 4-1/2" MINI TONGUE & GROOVE PLIER (#424G) | 20 |
| 82-6000 | CHANNELLOCK 6-1/2" SMALL TONGUE & GROOVE PLIER (#426G) | 20 |
| 82-6080 | CHANNELLOCK 8" STANDARD TONGUE & GROOVE PLIER (#428) | 20 |
| 82-6100 | CHANNELLOCK 10" STANDARD TONGUE & GROOVE PLIER (#430G) | 20 |
| 82-6200 | CHANNELLOCK 12" STANDARD TONGUE & GROOVE PLIER (#440G) | 20 |
| 82-6300 | CHANNELLOCK 12" CURVED TONGUE & GROOVE PLIER (#442G) | 20 |
| 82-6400 | CHANNELLOCK 16" STANDARD TONGUE & GROOVE PLIER (#460G) | 10 |
| 82-6450 | CHANNELLOCK 20" STANDARD TONGUE & GROOVE PLIER (#480) | 10 |
| 82-GS1 | TWIN PACK OF T&G PLIERS (#420 9-1/2" STANDARD & #426 6-1/2" SMALL) - #GS1 | 5 |
| 82-6500C | MADE IN USA 3/16" NUT DRIVER with BLACK HANDLE & HOLLOW SHAFT (TEKTON BRAND) | |
| 82-6600C | MADE IN USA 1/4" NUT DRIVER with BLACK HANDLE & HOLLOW SHAFT (TEKTON BRAND) | |
| 82-6700C | MADE IN USA 5/16" NUT DRIVER with BLACK HANDLE & HOLLOW SHAFT (TEKTON BRAND) | |
| 82-6900C | MADE IN USA 3/8" NUT DRIVER with BLACK HANDLE & HOLLOW SHAFT (TEKTON BRAND) | |
| 82-7000C | MADE IN USA 7/16" NUT DRIVER with BLACK HANDLE & HOLLOW SHAFT (TEKTON BRAND) | |
| 82-7100C | MADE IN USA 1/2" NUT DRIVER with BLACK HANDLE & HOLLOW SHAFT (TEKTON BRAND) | |
| 82-7200 | 7-1/2" LONG NOSE PLIER with SIDE CUTTER (#317G) | 20 |
| 82-7300 | 7-1/2" ROUND NOSE LINEMEN'S PLIER (#367) | 20 |
| 82-7400 | 7" LINEMEN'S PLIERS with END CUTTER (#357G) | 20 |
| 82-7500 | 8" LINEMEN'S PLIERS with END CUTTER (#E358) | 20 |
| 82-7600 | 7" LAP JOINT DIAGONAL PLIERS (#337G) | 20 |
| 82-7700 | 9" IRONWORKER'S PLIERS (#350S) | 20 |
| 82-410 | 9" TONGUE & GROOVE NUTBUSTER PLIERS (#410) | 20 |
| 82-412 | 6.5" V-JAW PLIERS (#412) | 20 |
| 82-414 | 14" TONGUE & GROOVE NUTBUSTER PLIERS (#414) | 10 |
| 82-526 | 6.5" SLIP JOINT PLIERS (#526) | 20 |
| 82-7800 | 8-1/4" WIRING TOOL (#908G) | 20 |
| 82-7860 | 7" WIRE STRIPPER AND CUTTER (#957) | 20 |
| 82-7900 | 6" WIRE STRIPPER AND CUTTER (#958G) | 20 |
| 82-7806N | CHANNELLOCK 6" ADJUSTABLE WRENCH with BLACK PHOSPHATE FINISH (#806NW) | 20 |
| 82-7808N | CHANNELLOCK 8" ADJUSTABLE WRENCH with BLACK PHOSPHATE FINISH (#808NW) | 20 |
| 82-7810N | CHANNELLOCK 10" ADJUSTABLE WRENCH with BLACK PHOSPHATE FINISH (#810NW) | 20 |
| 82-7812N | CHANNELLOCK 12" ADJUSTABLE WRENCH with BLACK PHOSPHATE FINISH (#812NW) | 20 |
| 82-7815N | CHANNELLOCK 15" ADJUSTABLE WRENCH with BLACK PHOSPHATE FINISH (#815N) | 5 |
| 82-GL10 | CHANNELLOCK 10" GRIPLOCK PLIER (#GL10) | 20 |
| 82-GL12 | CHANNELLOCK 12" GRIPLOCK PLIER (#GL12) | 20 |

HAND TOOLS



#82-8WCB



#82-7700
(350S)



#82-7400(357G)
#82-7500(E358)



#82-5800(422G)
#82-6300(442G)
#82-412(412)



#82-7600
(337G)



#82-5600
(415G)



#82-5700(420G)
#82-5900(424G)
#82-6000(426G)
#82-6080(428)
#82-6100(430G)
#82-6200(440G)
#82-6400(460G)
#82-6450(480)



#82-368(368)
#82-369(369)



#82-GL10 & #82-GL12

| DESCRIPTION | |
|--|---|
| PART # | (ALL PLIERS HAVE A BLUE COMFORT GRIP handle WITH heat-treated cutting edges and steel neck) |
| 82-8WCB 82-6WCB | Features smooth jaws that open up to 1-3/4" wide #8WCB plier has an overall length of 8" #6WCB plier has an overall length of 6" |
| 82-7700 | #350S Ironworker's plier has an overall length of 9" |
| 82-7600 | Features a lap joint/pipe grip design for versatile and precise cutting applications. Ideal for diagonal cutting. #337G has an overall length of 7" |
| 82-5800 82-6300 82-412 | Tongue & Groove combination pliers with a curved, V shaped Jaw design. #422G plier is 9.5" long; #442G plier is 12" long; #412 plier is 6.5" long |
| 82-7400 82-7500 | These end cutter pliers feature anvil (flat top) cutting edges. #357G plier is 7.5" long and #E358 is 8.5" long. |
| 82-5600 | Tongue & Groove combination plier with a smooth jaw to prevent scratches during use. #415G plier has an overall length of 10" |
| 82-5700 82-5900 82-6000 82-6080 82-6100 82-6200 82-6400 82-6450 | Tongue & Groove combo pliers with a standard jaw. #420G overall length is 9.5" #424G overall length is 4.5" #426G overall length is 6.5" #428 overall length is 8" #430G overall length is 10" #440G overall length is 12" #460G overall length is 16" #480 overall length is 20" |
| 82-GS1 | 2 pack of #420G & #426G pliers in a blister pack |
| 82-368 82-369 | Linemen's pliers with the crosshatch jaw and round nose maximizes cutting strength and grip. It is ideal for cutting steel cable. #368 is 8.5" long and #369 is 9.5" long. |
| 82-6500C 82-6600C 82-6700C 82-6800C 82-6900C 82-7000C 82-7100C | These are professional grade, hollow shaft nut drivers. TEKTON Brand |
| 82-410 82-414 | NUTBUSTER pliers feature parrot shaped, extra wide jaws for ultimate strength that is as strong as a pipe wrench. Special design eliminate finger pinching. #410 plier is 9.5" long and #414 plier is 14" long. |



MADE IN USA NUTDRIVER
with Black Handle

HAND TOOLS



#82-348E (E348)



#82-526 (526)



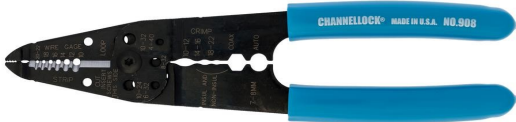
#82-326 (326)

#82-7200 (317G)



#82-7860 (957)

(957)



#82-7800 (908G)



#82-7806N (806NW)

#82-7808N (808NW)

#82-7810N (810NW)

#82-7812N (812NW)

#82-7815N (815N)



***ALL PRICES ARE ON PAGE 4

#82-410(410)

#82-414(414)

| PART# | DESCRIPTION |
|--|---|
| (ALL PLIERS HAVE A BLUE COMFORT GRIP handle WITH heat-treated cutting edges and steel neck) | |
| 82-348E | Features high strength/leverage, crosshatch jaw with a hollow cutout for maximum grip and cutting strength. #E348 plier has an overall length of 8". |
| 82-526 | Features an extra thick nose and slip joint design that is ideal for cutting wire. #526 plier's length is 6.5" |
| 82-326 82-7200 | Features a high leverage, crosshatch jaw with a side cutter. Long, sharp nose feature is ideal for tight work areas. #326 is 6" long and #317G is 7.5" long. |
| 82-7800 82-7900 | These wire strippers/cutters feature scissor type cutting edges for crimping wires. Precision machined holes pull and loop wires. #908G plier is 8.25" long and #958G plier is 6" long. |
| 82-7860 | These wire strippers/cutters feature scissor type cutting edges for crimping wires. Precision machined holes pull and loop wires. It only cuts copper wires. #957 plier has an overall length of 7" |
| 82-7806N 82-7808N 82-7810N 82-7812N 82-7815N | These heavy duty adjustable wrenches feature a black phosphate handle and fractional markings on the wide mouth jaw. #806NW has an overall length of 6" #808NW has an overall length of 8" #810NW has an overall length of 10" #812NW has an overall length of 12" #815N has an overall length of 15" |

| PART # | DESCRIPTION | CASE Quantity |
|-----------|---|---------------|
| 82-6WCB | 6" CHANNELLOCK WIDE MOUTH ADJUSTABLE WRENCH (#6WCB) | 20 |
| 82-810WCB | 10" CHANNELLOCK CODE BLUE ADJUSTABLE WRENCH (#810WCB) | 20 |
| 82-812WCB | 12" CHANNELLOCK CODE BLUE ADJUSTABLE WRENCH (#812WCB) | 20 |
| 82-927 | 8" CHANNELLOCK RETAINING RING PLIER (#927) | 20 |
| 82-7760 | 10" CHANNELLOCK FENCE TOOL (#85) | 20 |
| 82-6150 | 10" CHANNELLOCK CURVED V-JAW TONGUE & GROOVE PLIER (#432) | 20 |
| 82-6500 | ECONOMY 3/16" NUT DRIVER with Hollow Shaft (IMPORTED) | 48 |
| 82-6600 | ECONOMY 1/4" NUT DRIVER with Hollow Shaft (IMPORTED) | 48 |
| 82-6700 | ECONOMY 5/16" NUT DRIVER with Hollow Shaft (IMPORTED) | 48 |
| 82-6800 | ECONOMY 11/32" NUT DRIVER with Hollow Shaft (IMPORTED) | 48 |
| 82-6900 | ECONOMY 3/8" NUT DRIVER with Hollow Shaft (IMPORTED) | 48 |
| 82-7000 | ECONOMY 7/16" NUT DRIVER with Hollow Shaft (IMPORTED) | 48 |
| 82-7100 | ECONOMY 1/2" NUT DRIVER with Hollow Shaft (IMPORTED) | 48 |



ECONOMY NUTDRIVER features a SOFT GRIP RUBBER HANDLE

HAND TOOLS

CHANNELLOCK SPEEDGRIP PLIERS

- Premium Channellock Tongue & Groove pliers that last longer than the standard tongue & groove pliers
- Has push button adjustments for more secure adjustments of jaw sizes
- Built-in reamer deburrs pipe and crosshatch teeth has better grip



| PART # | DESCRIPTION | CASE Quantity |
|---------|---|---------------|
| 82-6090 | CHANNELLOCK 8" SPEEDGRIP PLIER (#428X) | 20 |
| 82-6130 | CHANNELLOCK 10" SPEEDGRIP PLIER (#430X) | 20 |
| 82-6230 | CHANNELLOCK 12" SPEEDGRIP PLIER (#440X) | 20 |

SCREWDRIVERS

- Industrial grade screwdrivers for professional contractors
- PRIVATE LABEL program and Display Box applies to a minimum quantity of 72 pieces for the part number 82-8100



PART# 82-8100

| PART # | DESCRIPTION | Display Box Qty. |
|---------|--|------------------|
| 82-8100 | 6 in 1 Screwdriver with 1/4" & 5/16" Nut Setters, #1 Phillips, #2 Phillips, 5/16" & 3/16" Slotted tips | 12 |
| 82-8600 | 2N1 Channellock Screwdriver (#21CBB) with #1 Phillips & 5/32" Slotted tips | 10 |
| 82-8700 | 1/8" Slotted x 3" Long POCKET SCREWDRIVER | |



PART# 82-8600

ADJUSTABLE WRENCHES

- Industrial grade WRENCHES for professional contractors
- Heat-Treated Steel Alloy material
- Adjustable hex jaw design

| PART # | DESCRIPTION |
|---------|-----------------------|
| 82-4000 | 6" ADJUSTABLE WRENCH |
| 82-4100 | 8" ADJUSTABLE WRENCH |
| 82-4200 | 10" ADJUSTABLE WRENCH |
| 82-4300 | 12" ADJUSTABLE WRENCH |
| 82-4400 | 15" ADJUSTABLE WRENCH |



BOLT CUTTERS

- Industrial grade bolt cutters for professional contractors
- Drop forged tempered jaws
- High Speed Steel tubular steel alloy handle

| PART # | DESCRIPTION |
|---------|-----------------------|
| 82-1500 | 14" STEEL BOLT CUTTER |
| 82-1600 | 18" STEEL BOLT CUTTER |
| 82-1700 | 24" STEEL BOLT CUTTER |
| 82-1800 | 36" STEEL BOLT CUTTER |



HAND TOOLS

AVIATION TIN SNIPS

- Drop forged tempered steel blade
- Comes with a safety latch for safe handling

| PART # | DESCRIPTION |
|---------|--|
| 82-1900 | RIGHT CUT AVIATION TIN SNIP (IMPORTED) |
| 82-2000 | LEFT CUT AVIATION TIN SNIP (IMPORTED) |
| 82-2100 | STRAIGHT CUT AVIATION TIN SNIP (IMPORTED) |
| 82-2120 | RIGHT CUT PRO-GRADE AVIATION TIN SNIP (Made in USA) |
| 82-2130 | LEFT CUT PRO-GRADE AVIATION TIN SNIP (Made in USA) |
| 82-2140 | STRAIGHT CUT PRO-GRADE AVIATION TIN SNIP (Made in USA) |



HEX KEY SETS

- Chrome Vanadium keys with a plastic body

| PART # | DESCRIPTION |
|---------|---|
| 82-8000 | FRACTIONAL 9PC HEX KEY SET with sizes 5/64" to 1/4" |
| 82-8030 | METRIC 9PC HEX KEY SET with sizes 1.5MM to 6MM |



CLEAN UP TOWELS

- Absorbent and machine washable cotton

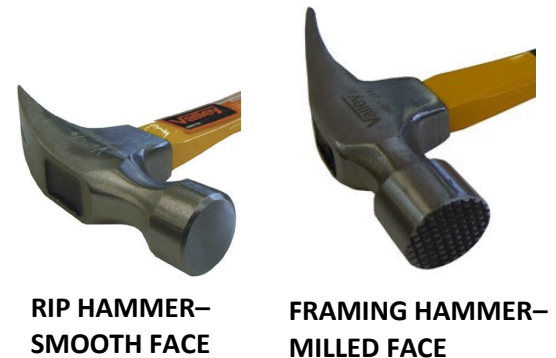
| PART # | DESCRIPTION | CASE Qty. |
|---------|---|-----------|
| 85-6420 | WHITE Terry Rags (sold per bag, 12 towels per bag) | 15 bags |
| 85-6430 | BLUE MICRO-FIBER TOWELS (sold as 12 towels per bag) | 20 bags |



HAMMERS

- Heat-treated tempered steel hammer head
- Milled Face is a waffle pattern textured surface

| PART # | DESCRIPTION |
|---------|---|
| 82-5580 | 16OZ. RIP HAMMER- FIBERGLASS HANDLE (SMOOTH FACE) |
| 82-5520 | 24OZ. FRAMING HAMMER- MILLED FACE (FIBERGLASS HANDLE) |
| 82-5550 | 24OZ. FRAMING HAMMER- MILLED FACE (STEEL HANDLE) |
| 82-5590 | 20OZ. ROCK CHIP HAMMER (WOOD HANDLE) |
| 89-6214 | 4LB. SLEDGEHAMMER (FIBERGLASS HANDLE) |
| 89-6218 | 10LB. SLEDGEHAMMER (WOOD HANDLE) |



**RIP HAMMER-
SMOOTH FACE**

**FRAMING HAMMER-
MILLED FACE**



**ROCK CHIP
HAMMER**



SLEDGEHAMMER



HAND TOOLS

STANLEY ORGANIZER BOX

- Heavy Duty 25 part compartment box
- Removable inner compartments with a clear HDPE lid for instant viewing



| PART # | DESCRIPTION | CASE Quantity |
|---------|--|---------------|
| 06-5000 | STANLEY ORGANIZER BOX with 25 Removable Compartments | 4 |

LEVELS

- Includes 3 acrylic easy to read vials that can be read in any direction
- Pipe groove design on the edges with magnets for a superior grip

| PART # | DESCRIPTION | CASE Quantity |
|---------|-----------------------------------|---------------|
| 82-9200 | STANLEY 9" MAGNETIC TORPEDO LEVEL | 36 |
| 82-9300 | 24" ECONOMY MAGNETIC LEVEL | |
| 82-9400 | | |
| 82-9500 | ECONOMY 9" MAGNETIC TORPEDO LEVEL | |



ECONOMY 9" LEVEL



STANLEY 9" TORPEDO LEVEL

UTILITY KNIVES

- Heavy Duty steel body
- All blades contain Taiwanese SK5 steel for the best cutting performance
- Folding Knife has a pocket clip and a collapsible lock back function

| PART # | DESCRIPTION | CASE Quantity |
|---------|--|---------------|
| 82-2200 | Standard RETRACTABLE UTILITY KNIFE | |
| 82-2300 | 10PK. UTILITY KNIFE REPLACEMENT BLADES | |
| 82-2330 | TURBO KNIFE—GOLD | 6 |
| 82-2320 | TURBO KNIFE—RED | 6 |
| 82-2310 | TURBO KNIFE—BLUE | 6 |
| 82-2400 | PRO-CUT UTILITY KNIFE WITH HOLSTER K2010 | 12 |
| 82-2450 | QUICK ACTION FOLDING KNIFE | 72 |



TURBOKNIFE



PRO-CUT UTILITY KNIFE



QUICK ACTION FOLDING UTILITY KNIFE



PRO-CUT UTILITY KNIFE DISPLAY CASE

ACID TIN BRUSHES

- Heavy Duty TIN handle with metal brushes

| PART NO. | DESCRIPTION |
|----------|--|
| 85-2005 | #1x3/8" WIDE ACID TIN BRUSH (ONLY Sold as a pack of 144 pieces) |



HAND TOOLS

PUTTY KNIVES

- Perfect for applying putty & surface compound into cracks found in drywall joints and seams

| PART # | DESCRIPTION |
|---------|------------------------------------|
| 85-2010 | 1-1/2" PLASTIC PUTTY KNIFE |
| 85-2011 | 2" PLASTIC PUTTY KNIFE |
| 85-2012 | 3" PLASTIC PUTTY KNIFE |
| 85-2013 | 4" PLASTIC PUTTY KNIFE |
| 85-2015 | 6" PLASTIC PUTTY KNIFE |
| 85-2016 | 1-1/2" STAINLESS STEEL PUTTY KNIFE |
| 85-2017 | 2" STAINLESS STEEL PUTTY KNIFE |
| 85-2018 | 3" STAINLESS STEEL PUTTY KNIFE |
| 85-2019 | 4" STAINLESS STEEL PUTTY KNIFE |
| 85-2020 | 5" STAINLESS STEEL PUTTY KNIFE |
| 85-2021 | 6" STAINLESS STEEL PUTTY KNIFE |



**STAINLESS
STEEL BLADE**

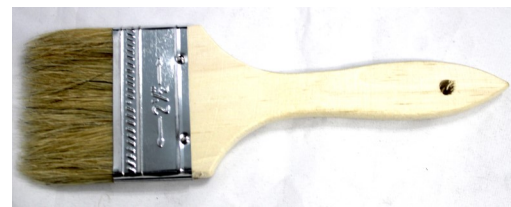


**ABS PLASTIC
BLADE**

CHIP BRUSHES

- 2" brush length
- Smooth wood handle

| PART # | COLOR |
|---------|-----------------------------|
| 85-2001 | 1" CHIP BRUSH (WOOD HANDLE) |
| 85-2002 | 2" CHIP BRUSH (WOOD HANDLE) |
| 85-2003 | 3" CHIP BRUSH (WOOD HANDLE) |
| 85-2004 | 4" CHIP BRUSH (WOOD HANDLE) |



Hand Saws

- High Carbon Steel blade with filed teeth
- Wallboard Saw (Drywall Saw) cuts drywall and plasterboard

| PART # | DESCRIPTION |
|---------|-------------------------------------|
| 14-1000 | 6" WALLBOARD SAW with RUBBER HANDLE |
| 14-0008 | 6" WALLBOARD SAW with WOOD HANDLE |
| 16-1400 | 14" TOOLBOX SAW with BLUE HANDLE |



14" TOOLBOX SAW



WALLBOARD SAW

BAHCO TOOLS

- Industry leading BAHCO branded tools
- Sandvik cutting teeth for the best cutting performance

| PART # | DESCRIPTION |
|---------|---|
| 16-1500 | 14" BAHCO PVC SAW with BLACK HANDLE |
| 16-1510 | 12" HEAVY DUTY HACKSAW FRAME (BAH-225-PLUS) |
| 16-1530 | 16" RAZORTOOTH SAW (2500-16-XT-HP) |
| 16-1540 | 12" X 18TPI HACKSAW BLADE (3900-300-18-10P) |



HAND TOOLS

MEASURING TAPES

- Mylar blade coating combined with a Blade locking mechanism
- **Private Label Program Available for 25' tape measures (48 piece MOQ)**

| PART # | DESCRIPTION | CASE Quantity |
|----------|---|---------------|
| 77-0010 | 10' Outer Diameter TAPE MEASURE CHROME | 200 |
| 77-5025O | 25' x 1" H.D. RUBBER GRIP TAPE (ORANGE) | 48 |
| 77-5025G | 25' x 1" H.D. RUBBER GRIP TAPE (GREEN) | 48 |
| 77-5025S | 25' x 1" H.D. RUBBER GRIP TAPE (SILVER) | 48 |
| 77-5025Y | 25' x 1" H.D. RUBBER GRIP TAPE (YELLOW) | 48 |



KOMELON MEASURING TAPES

- Mylar blade coating for increased tool life

| PART # | DESCRIPTION |
|---------|--|
| 85-2100 | 1" x 16' Self Locking Measuring Tape |
| 85-2200 | 1" x 25' Self Locking Measuring Tape |
| 85-2400 | 1" x 25' CHROME Measuring Tape |
| 85-2500 | 1" x 30' CHROME Measuring Tape |
| 85-2600 | 1" x 25' CHROME Engineering Measuring Tape |
| 85-2650 | 1" x 25' MAG-GRIP PRO Measuring Tape (#7125IE) |
| 85-2700 | 3/8" x 100' Self Winding Tape Measure |
| 85-2800 | 4" MEASURING WHEEL |
| 85-2900 | 10" MEASURING WHEEL |
| 85-2910 | 25' Gripper Speedmark Tape Measure |



SELF-WINDING TAPE MEASURE

PLASTIC ANCHOR SET KITS

- Heavy Duty heat-treated steel screws
- 3WAY screws have a Phillips/Slot/Hex head. 2WAY screws have a round PHILLIPS & Slot head. All screws are #10 x 1"
- Each set includes anchors, screws, & 1/4" masonry drill bit
- DACRONIZED screw kit includes deck screws
- CONICAL Anchors hold more weight than Super Ribbed Anchors



| PART # | DESCRIPTION |
|---------|---|
| 06-1690 | 100PC. SUPER RIBBED ANCHOR KIT with 3WAY screws |
| 06-1680 | 100PC. SUPER RIBBED ANCHOR KIT with 2WAY screws |
| 06-1000 | 100PC. BLUE CONICAL ANCHOR KIT with 2WAY screws |
| 06-1060 | 100PC. RED CONICAL ANCHOR KIT with 2WAY screws |
| 06-1200 | 100PC. BLUE CONICAL ANCHOR KIT with 3WAY screws |
| 06-1260 | 100PC. RED CONICAL ANCHOR KIT with 3WAY screws |
| ANC-BOX | 2 PART COMPARTMENT BOX |
| 06-2000 | #8x1" PHILLIPS SCREWS with CONICAL Anchors |
| DAC6158 | 100 PIECE #6x1-5/8" DACRONIZED SCREWS |
| DAC6200 | 100 PIECE #6x2" DACRONIZED SCREWS |

DACRONIZED SCREWS/ DACROTIZED SCREWS



SUPER RIBBED ANCHOR (AVAILABLE IN GRAY or YELLOW)



CONICAL ANCHOR (AVAILABLE IN RED OR BLUE)



HAND TOOLS

EZ ANCHOR KITS

- EZ Anchors are self drilling anchors
- Spiral Thread holds more weight than plastic anchors

| PART # | DESCRIPTION |
|---------|---|
| 06-1850 | 50PC. NYLON EZ ANCHOR SET with #8 x 1" PHILLIP Screws |
| 06-1950 | 50PC. ZINC EZ ANCHOR SET with #8 x 1" PHILLIP Screws |



****Comes with a #2 x 1" PHILLIPS Insert Bit**

FLAT FILES

- Heat-Treated steel blade
- Milled Pattern file with a vinyl dipped handle

| PART # | DESCRIPTION |
|---------|-----------------------|
| 82-8903 | 8" FLAT BASTARD FILE |
| 82-8904 | 10" FLAT BASTARD FILE |
| 82-8905 | 12" HALF ROUND FILE |
| 82-8906 | 14" HALF ROUND FILE |



CAULKING GUNS

- Professional Contractor Grade caulking guns
- Spring loaded trigger handle. Ratchet rod pushes sealant very easily with minimal effort
- Built in cutter and plunger pointed end opens caulking tubes

| PART # | DESCRIPTION |
|---------|---|
| 83-2100 | 9" HALF BARREL CAULKING GUN |
| 83-2130 | 13" 29OZ. CAPACITY Half Barrel CAULKING GUN |
| 83-2150 | 9" SKELETON TYPE CAULKING GUN |



GLOVES

****ALL GLOVES are sold ONLY in pair quantities**

COTTON GLOVES

- 100% cotton liner and palm

| PART# | DESCRIPTION |
|---------|--|
| 85-5100 | Large Brown Jersey (Carded) |
| 85-5250 | Premium HEAVY DUTY Brown Jersey (Bulk) |
| 85-5300 | Large White Canvas (Carded) |
| 85-5500 | Large Canvas PVC Dotted Gloves |



BROWN JERSEY



CANVAS



CANVAS PVC

BLUE FLEX GRIP GLOVES

- Heavy Duty Industrial Grade work glove
- Blue Rubber palm and fingers for a strong grip
- Knitted wrist and cotton liner for extra comfort

| PART# | SIZE |
|---------|--------|
| 85-3200 | SMALL |
| 85-3300 | MEDIUM |
| 85-3400 | LARGE |
| 85-3500 | XLARGE |



SHOWA ATLAS GLOVES

- Rubber Gloves (Blue Rubber palm & Cotton fingers) are for general purpose use
- Nitrile Tough Gloves (Nitrile coated palm & Nylon lined fingers) are perfect for handling small objects
- Thermal Glove keeps your hands warm
- Re-GRIP Glove (Rubber waffle patterned palm, Reinforced thumb crotch pattern & Cotton liner) creates the strongest grip possible

| PART# | STYLE | SIZE |
|---------|---------------|--------|
| 85-3600 | RUBBER | MEDIUM |
| 85-3700 | RUBBER | LARGE |
| 85-3800 | RUBBER | XLARGE |
| 85-3850 | NITRILE TOUGH | SMALL |
| 85-3900 | NITRILE TOUGH | MEDIUM |
| 85-4000 | NITRILE TOUGH | LARGE |
| 85-4100 | NITRILE TOUGH | XLARGE |
| 85-4200 | THERMAL | MEDIUM |
| 85-4300 | THERMAL | LARGE |
| 85-4400 | THERMAL | XLARGE |
| 85-6010 | Re-GRIP | MEDIUM |
| 85-6020 | Re-GRIP | LARGE |
| 85-6030 | Re-GRIP | XLARGE |



NITRILE TOUGH



THERMAL



RE-GRIP



RUBBER

GLOVES

****ALL GLOVES are sold ONLY in pair quantities**

IRONCLAD Branded GLOVES

- Industry leading IRONCLAD brand. Touchscreen enabled
- Velcro wrist and padded knuckles for heavy duty use

| PART# | DESCRIPTION | SIZE |
|---------|----------------------------|--------|
| 85-6050 | COMMAND PRO LEATHER GLOVE | MEDIUM |
| 85-6052 | COMMAND PRO LEATHER GLOVE | LARGE |
| 85-6055 | COMMAND PRO LEATHER GLOVE | XLARGE |
| 85-6060 | COMMAND GRIP LEATHER GLOVE | MEDIUM |
| 85-6062 | COMMAND GRIP LEATHER GLOVE | LARGE |
| 85-6065 | COMMAND GRIP LEATHER GLOVE | XLARGE |



COMMAND GRIP
has a silicone palm
for an extreme grip



COMMAND PRO has
a leather yellow
palm

Disposable GLOVES

| PART# | TYPE | SIZE | Gloves per Box |
|---------|--------------------------|------|----------------|
| 85-4450 | 4MIL Natural Latex | M | 100 |
| 85-4500 | 4MIL Natural Latex | L | 100 |
| 85-4600 | 4MIL Natural Latex | XL | 100 |
| 85-4650 | 6MIL BEIGE LATEX | M | 100 |
| 85-4700 | 6MIL BEIGE LATEX | L | 100 |
| 85-4800 | 6MIL BEIGE LATEX | XL | 100 |
| 85-4803 | 6MIL BLACK MAMBA NITRILE | M | 100 |
| 85-4805 | 6MIL BLACK MAMBA NITRILE | L | 100 |
| 85-4808 | 6MIL BLACK MAMBA NITRILE | XL | 100 |
| 85-4809 | 6MIL BLACK MAMBA NITRILE | 2XL | 100 |
| 85-4820 | 14MIL Blue LATEX | M | 50 |
| 85-4840 | 14MIL Blue LATEX | L | 50 |
| 85-4860 | 14MIL Blue LATEX | XL | 50 |



****CASE QUANTITY: 10 Inner Boxes**

"UGLY" PVC CHIP Coated GLOVES

- PVC chips makes these gloves abrasion resistant
- Perfect for drain cleaning and handling sharp objects

| PART# | DESCRIPTION |
|---------|--|
| 85-4900 | PVC CHIP COATED ROUGH SURFACE Glove with Short Safety Cuff |
| 85-4500 | PVC CHIP COATED ROUGH SURFACE Glove with 12" LONG Cuff |



12" LONG CUFF



SHORT CUFF

Leather Palm Work GLOVES

- Pigskin leather gloves that is perfect for demolition projects where abrasion, puncture, and water resistance is needed
- Cotton liner and a gunn pattern for comfort and safety

| PART# | DESCRIPTION |
|---------|--|
| 85-5600 | SINGLE Leather Palm Work Glove (Large) |
| 85-5700 | Double Leather GREEN Palm Work Glove (Large) |



DOUBLE PALM



GLOVES

****ALL GLOVES are sold ONLY in pair quantities**

LEATHER DRIVER'S GLOVES

- Heavy Duty pigskin leather material
- Keystone thumb design and elastic backing



****FLEECE LINED gloves have a red liner to keep hands warm**

| PART# | DESCRIPTION |
|---------|------------------------|
| 85-5780 | STANDARD (MEDIUM) |
| 85-5800 | STANDARD (LARGE) |
| 85-5802 | STANDARD (XLARGE) |
| 85-5897 | FLEECE LINED(MEDIUM) |
| 85-5900 | FLEECE LINED (LARGE) |
| 85-6000 | FLEECE LINED (X-LARGE) |

TRADESMEN GLOVES

- Velcro strap wrist for a secure fit
- Rubber padded palm and knuckles for heavy duty use
- Made for specific uses

| PART# | DESCRIPTION |
|---------|--------------------------|
| 85-5810 | Medium UTILITY/MECHANIC |
| 85-5820 | Large UTILITY/MECHANIC |
| 85-5830 | XLARGE UTILITY/MECHANIC |
| 85-5840 | Medium CARPENTER/FRAMAZ |
| 85-5850 | Large CARPENTER/FRAMAZ |
| 85-5860 | XLARGE CARPENTER/FRAMAZ |
| 85-5870 | Medium BOX HANDLER PRO |
| 85-5880 | Large BOX HANDLER PRO |
| 85-5890 | XLARGE BOX HANDLER PRO |
| 85-5895 | 2XL BOX HANDLER PRO |
| 85-6032 | ATLAS 26" XL POOL MARKET |



**UTILITY/
MECHANIC GLOVE**



**BOX HANDLER
PRO GLOVE**



**CARPENTER/
FRAMAZ GLOVE**

LAWN & GARDEN

WATER HOSES

- Red Industrial hose has is 100% rubber for hot/cold water
- 85-0100...85-0300 (Garden Hose)
 - Secure heavy duty BRASS coupling
- 85-0400...85-0600 (Heavy Duty NEVERKINK Hose)
 - Rigid Sleeve for kinking prevention
 - MicroShield® prevents mold & mildew buildup
- 85-0700...85-0900 (Commercial GRAY Hose)
 - Built for construction job sites
 - Power strain relief & Braided reinforcement
- Sweeper nozzle has a fixed pressure output



****HEAVY DUTY GARDEN HOSE**



****NEVERKINK GARDEN HOSE**



****COMMERCIAL GRAY HOSE**



****RED INDUSTRIAL RUBBER HOSE**

| PART# | SIZE | TYPE | CASE QTY. |
|---------|-------------|--|-----------|
| 85-0100 | 5/8" X 50' | HEAVY DUTY GARDEN | 5 |
| 85-0200 | 5/8" X 75' | HEAVY DUTY GARDEN | 3 |
| 85-0300 | 5/8" X 100' | HEAVY DUTY GARDEN | 3 |
| 85-0400 | 5/8" X 50' | NEVERKINK | 5 |
| 85-0500 | 5/8" X 75' | NEVERKINK | 3 |
| 85-0600 | 5/8" X 100' | NEVERKINK | 3 |
| 85-0700 | 3/4" X 50' | COMMERCIAL GRAY | 5 |
| 85-0800 | 3/4" X 75' | COMMERCIAL GRAY | 3 |
| 85-0900 | 3/4" X 100' | COMMERCIAL GRAY | 3 |
| 85-1000 | 3/4" X 50' | RED INDUSTRIAL RUBBER | 3 |
| 85-1150 | 2" | BRASS SWEEPER NOZZLE | |
| 85-1200 | | ZINC PLATED Handle PISTOL GRIP NOZZLE | |
| 85-1300 | | INSULATED Plastic Handle PISTOL GRIP HOSE NOZZLE | |
| 85-1350 | | Y SHAPE ZINC HOSE ADAPTER | |



SWEEPER NOZZLE



PISTOL GRIP HOSE NOZZLE

DIGGING BARS

- Drop forged, steel 72" long bars
- Post Hole bar contains a blunt end and a pointy pick end
- San Angelo bar contains a chisel blade end and a pointy pick end

| PART # | DESCRIPTION |
|---------|----------------------------|
| 89-4010 | 72" POST HOLE DIGGING BAR |
| 89-4020 | 72" SAN ANGELO DIGGING BAR |



POSTHOLE DIGGING BAR (#89-4010)

LAWN & GARDEN

LANDSCAPE FABRICS

- Eliminates the use of weed control chemicals
- Lets water, and important nutrients in while blocking out light
- Keeps soil healthy & moisturized and allows CO₂ to escape
- 6" Fabric Pins Available (89-6900)
 - Perfect for installing landscape fabrics
 - Sold as a box of 500 pins



| PART# | SIZE | WEIGHT | CASE QTY. |
|---------|---------------------|--------|-----------|
| 89-6910 | 3' X 50' (10 Yrs.) | 1.8 OZ | 20 |
| 89-6915 | 3' X 100' (10 Yrs.) | 1.8 OZ | 11 |
| 89-6930 | 3' X 50' (15 Yrs.) | 2.0 OZ | 18 |
| 89-6935 | 3' X 100' (15 Yrs.) | 2.0 OZ | 9 |
| 89-6920 | 3' X 50' (20 Yrs.) | 2.2 OZ | 14 |
| 89-6925 | 3' X 100' (20 Yrs.) | 2.2 OZ | 8 |
| 89-6940 | 4' X 50' (20 Yrs.) | 2.2 OZ | 14 |
| 89-6945 | 4' X 100' (20 Yrs.) | 2.2 OZ | 8 |

***Comes with a display case**

| PART# | SIZE | WEIGHT |
|---------|----------------|--------|
| 89-6715 | 3' X 250' | 2.2 OZ |
| 89-6928 | 4' x 250' | 2.2 OZ |
| 89-6720 | 6' X 100' | 2.2 OZ |
| 89-6725 | 6' X 250' | 2.5 OZ |
| 89-6706 | 6' X 300' | 3.0 OZ |
| 89-6900 | 6" FABRIC PINS | |

***Sold as individual rolls**

UNDERLINER FABRICS

- Super heavy duty fabric used to separate rock and gravel from soil and dirt to prevent damage to the soil

| PART# | SIZE | WEIGHT |
|---------|-----------|--------|
| 89-6708 | 3' X 50' | 4.0 OZ |
| 89-6710 | 5' X 360' | 4.0 OZ |

***Sold as individual rolls**



MATTOCK PARTS

- Heavy Duty drop forged, heat-treated steel material
- Pick Head has a pick end and a flat chisel blade end
- Railroad Head is perfect for striking hard soils or clay
- Cutter Head contains 2 cutting axe tips for cutting

| PART# | DESCRIPTION |
|---------|----------------------------|
| 89-6150 | 5LB PICK MATTOCK HEAD |
| 89-6350 | 5LB RAILROAD PICK HEAD |
| 89-6250 | 5LB CUTTER MATTOCK HEAD |
| 89-6360 | 36" WOOD PICK HANDLE |
| 89-6380 | 36" FIBERGLASS PICK HANDLE |



PICK MATTOCK HEAD



PICK HANDLE



CUTTER MATTOCK HEAD



RAILROAD PICK MATTOCK HEAD

LANDSCAPE RAKES

- Professional contractor grade rake
- Heavy Duty Fiberglass handle
- Supporting brace is included

| PART# | DESCRIPTION |
|---------|--------------------|
| 85-2024 | 24" LANDSCAPE RAKE |
| 85-2036 | 36" LANDSCAPE RAKE |



CONTRACTOR GRADE BROOM

- Professional contractor grade broom
- Heavy Duty wood handle
- Supporting brace is included

| PART# | DESCRIPTION |
|---------|----------------------------------|
| 85-2000 | Contractor Broom with 24" Handle |



FILTER DRAIN SOCK

- FITS BOTH 3" & 4" DIAMETER PIPES
- Designed to keep out dirt & sediment in perforated pipe
- Prevents the build-up of rot, mold, and mildew
- High Quality 100% Polyester Fabric

| PART# | SIZE | COLOR |
|---------|-----------|-------|
| 89-4100 | 4" X 100' | WHITE |
| 89-6804 | 4" X 100' | BLACK |
| 89-6806 | 3" X 100' | BLACK |
| 89-4150 | 6" X 100' | BLACK |



TRASH BAGS

- Contractor Grade bags that are made for the jobsite
- Heavy Duty Polyethylene material

| PART# | DESCRIPTION | WIDTH x LENGTH (IN.) |
|---------|--------------------------|----------------------|
| 85-1400 | 20 BAGS PER BOX, 3MIL | 32" X 50" |
| 85-1450 | 50 BAGS PER BOX, 3MIL | 32" X 50" |
| 85-1480 | 100 BAGS PER BOX, 1.2MIL | 33" X 40" |



TURF CUTTER/CARPET KNIFE

- Cuts artificial turf, carpet, vinyl tile, wallpaper, and linoleum
- Quick change dial allows for instant blade exchange

| PART# | DESCRIPTION |
|---------|--|
| 82-2350 | FIXED BLADE TURF KNIFE with DOUBLE EDGE BLADES |
| 82-2360 | TURF KNIFE REPLACEMENT BLADES (5 PACK) |



LAWN & GARDEN

SOIL TOOLS

- Soil Probe features a 4' long fiberglass handle and a T shaped handle with rubber ends. Made for poking and loosening soil
- Sod Knife features a high carbon steel blade for cutting turf

| PART# | DESCRIPTION |
|---------|--------------------------|
| 89-6500 | 4' FIBERGLASS SOIL PROBE |
| 82-2500 | 8" SOD/LINOLEUM KNIFE |



SOD KNIFE



FIBERGLASS PROBE

SHOVELS

- Heavy Duty tempered steel blade
- 4 feet long handle
- Cushioned grip on fiberglass handle

| PART# | POINT SHAPE | HANDLE TYPE |
|---------|-------------|-------------|
| 89-3010 | ROUND | FIBERGLASS |
| 89-3020 | SQUARE | FIBERGLASS |
| 89-3030 | ROUND | WOOD |
| 89-3040 | SQUARE | WOOD |



TRENCHING SHOVELS

- Heavy Duty tempered steel blade with a foot step and V-angled blade
- V-shape digs into soil to make a trench
- 4 feet long handle
- Cushioned grip on fiberglass handle

| PART# | BLADE WIDTH | BLADE COLOR | HANDLE TYPE |
|---------|-------------|-------------|-------------|
| 89-1003 | 3" | BLUE | WOOD |
| 89-1004 | 4" | ORANGE | WOOD |
| 89-1005 | 5" | RED | WOOD |
| 89-1006 | 6" | GREEN | WOOD |
| 89-2003 | 3" | BLUE | FIBERGLASS |
| 89-2004 | 4" | ORANGE | FIBERGLASS |
| 89-2005 | 5" | RED | FIBERGLASS |
| 89-2006 | 6" | GREEN | FIBERGLASS |



ELECTRICAL PRODUCTS

BATTERIES

- Contractor Grade Alkaline Rayovac Batteries

| PART # | SIZE | PACKAGE | PACK SIZE |
|---------|----------------|---------|-----------|
| 85-8900 | AA (ALKALINE) | BULK | 8 |
| 85-9000 | AAA (ALKALINE) | BULK | 8 |
| 85-9100 | C (ALKALINE) | BULK | 6 |
| 85-9200 | D (ALKALINE) | BULK | 6 |
| 85-9300 | 9V (ALKALINE) | BULK | 6 |
| 85-9400 | HEAVY DUTY 9V | BULK | 6 |
| 85-9500 | AAA (ALKALINE) | CARDED | 4 |
| 85-9600 | AA (ALKALINE) | CARDED | 4 |
| 85-9700 | C (ALKALINE) | CARDED | 2 |
| 85-9800 | D (ALKALINE) | CARDED | 2 |
| 85-9900 | 9V (ALKALINE) | CARDED | 1 |



****Pack Size= Number of batteries in a bulk shrink wrap sleeve or a carded sleeve**

WIRE NUT CONNECTORS

- Standard style wire connectors
- Deep skirt protects users from short circuits
- Funnel entry guides wire to make the job easier

| PART # | COLOR & SIZE |
|---------|--------------|
| 84-3200 | GRAY 71B |
| 84-3300 | BLUE 72B |
| 84-3400 | ORANGE 73B |
| 84-3500 | YELLOW 74B |
| 84-3600 | RED 75B |



GRIP RIBS make twisting these wire nuts effortless

NYLON CABLE TIES

- Works in a temperature range of -40 degrees to 185 degrees
- Can be used indoor or outdoor
- High Tensile strength to last as long as possible

| PART # | LENGTH | COLOR | BAG QUANTITY |
|----------|--------|----------|--------------|
| 84-0100 | 4" | UV BLACK | 100 ties |
| 84-0200 | 8" | UV BLACK | 100 ties |
| 84-0300 | 11" | UV BLACK | 100 ties |
| 84-0400 | 14" | UV BLACK | 100 ties |
| 84-294-B | 18" | UV BLACK | 50 ties |
| 84-296-B | 24" | UV BLACK | 50 ties |
| 84-297-B | 36" | UV BLACK | 50 ties |
| 84-283-N | 4" | NATURAL | 100 ties |
| 84-287-N | 8" | NATURAL | 100 ties |
| 84-290-N | 11" | NATURAL | 100 ties |
| 84-291-N | 14" | NATURAL | 100 ties |
| 84-294-N | 18" | NATURAL | 50 ties |
| 84-296-N | 24" | NATURAL | 50 ties |
| 84-297-N | 36" | NATURAL | 50 ties |

****only sold in bag quantities**



Self locking pawl for a strong grip and high tensile strength

100% American nylon

Serrated sides for a smooth pull thru action

ELECTRICAL PRODUCTS

EXTENSION CORDS

- Water resistant, Abrasion resistant & Flame retardant
- Features a power indicator light on both ends

| PART # | CORD LENGTH | COLOR | CASE QTY. |
|---------|-------------|--------|-----------|
| 84-1200 | 25 FT | YELLOW | 8 |
| 84-1300 | 50 FT | GREEN | 5 |
| 84-1400 | 50 FT | BLUE | 5 |
| 84-1500 | 50 FT | PINK | 5 |
| 84-1600 | 50 FT | YELLOW | 5 |
| 84-1700 | 100 FT | GREEN | 3 |
| 84-1800 | 100 FT | BLUE | 3 |
| 84-1900 | 100 FT | RED | 3 |
| 84-2000 | 100 FT | YELLOW | 3 |
| 84-2050 | 100 FT | PINK | 3 |
| 84-2070 | 50 FT | ORANGE | |
| 84-2090 | 100 FT | ORANGE | |



****ORANGE COLORED EXTENSION CORDS use 16/3 gauge wiring. Every other extension cord has thicker 12/3 gauge wiring for heavy duty or jobsite tough use**

PIGTAIL POWER SUPPLY CORDS

- Water resistant, Abrasion resistant & Flame retardant
- 16/3 gauge parallel cord with 3 conductor wiring

| PART # | CORD LENGTH | PLUG STYLE |
|---------|-------------|-------------|
| 84-0720 | 3 FT | RIGHT ANGLE |
| 84-0820 | 6 FT | RIGHT ANGLE |
| 84-0740 | 3 FT | STRAIGHT |
| 84-0840 | 6 FT | STRAIGHT |



ELECTRICAL ADAPTER CORDS

- Water resistant, Abrasion resistant & Flame retardant
- 12/3 gauge wired cord adapters

| PART # | DESCRIPTION |
|---------|---------------------------------|
| 84-2200 | MALE TWIST / FEMALE "U" |
| 84-2300 | FEMALE TWIST / MALE "U" |
| 84-2600 | U-GROUND POWER BLOCK TRIPLE TAP |
| 84-2700 | TWIST POWER BLOCK TRIPLE TAP |
| 84-2250 | U-GROUND PLUG |
| 84-2260 | U-GROUND CONNECTOR |



HANDHELD DROP LIGHTS

- Handle features an ON/OFF switch
- Grounded outlet receptacle

| PART # | CORD LENGTH |
|---------|-------------|
| 84-2800 | 25 FEET |
| 84-2900 | 50 FEET |



SAFETY & WEATHER

BACK SUPPORT BELTS

- Elastic wide suspenders and adjustable clips everywhere

| PART # | SIZE |
|---------|--------------------|
| 85-7200 | MEDIUM (32"-38") |
| 85-7300 | LARGE (38"-48") |
| 85-7400 | X-LARGE (46"-56") |
| 85-7420 | 2X-LARGE (54"-58") |
| 85-7430 | 3X-LARGE (58"-62") |



SAFETY VESTS

- Multiple pockets & front zipper closure with reflective stripes

| PART # | SIZE | COLOR |
|---------|-------------------|-------------|
| 85-6450 | MEDIUM | NEON GREEN |
| 85-6500 | LARGE | NEON GREEN |
| 85-6600 | X-LARGE | NEON GREEN |
| 85-6700 | XX-LARGE | NEON GREEN |
| 85-6701 | MEDIUM | NEON ORANGE |
| 85-6702 | LARGE | NEON ORANGE |
| 85-6704 | X-LARGE | NEON ORANGE |
| 85-6706 | XX-LARGE | NEON ORANGE |
| 85-6708 | ONE SIZE FITS ALL | NEON ORANGE |



ONE SIZE FITS ALL
Orange Vest has
no pockets

KNEE PADS

- Economy Pads feature a plastic kneecap with foam padding
- Professional knee pads contain an air gel foam padded knee pad with dimples

| PART # | DESCRIPTION |
|---------|-----------------------------|
| 85-7500 | ECONOMY HARD CAP (BLACK) |
| 85-7600 | PROFESSIONAL AIR GEL (BLUE) |



PROFESSIONAL AIR
GEL KNEE PADS



ECONOMY HARD
CAP KNEE PADS

HARD HATS

- 6 point suspension design for a secure fit
- Full Brim hats have an outer rim on all sides for extra protection. Standard hats have an outer rim on the front

| PART # | COLOR |
|---------|------------------|
| 85-6710 | WHITE Standard |
| 85-6720 | YELLOW Standard |
| 85-6740 | BLUE Standard |
| 85-6750 | BLUE FULL BRIM |
| 85-6760 | WHITE FULL BRIM |
| 85-6770 | GREEN FULL BRIM |
| 85-6780 | RED FULL BRIM |
| 85-6790 | YELLOW FULL BRIM |



STANDARD



FULL BRIM

SAFETY & WEATHER

SAFETY GLASSES

- Anti-Scratch & anti-fog lenses with wraparound design

| PART # | LENS STYLE |
|---------|------------------------------------|
| 85-6800 | CLEAR |
| 85-6900 | SILVER MIRRORRED |
| 85-7000 | SMOKY GREY |
| 85-7100 | SAFETY GOGGLES (ONE SIZE FITS ALL) |



SAFETY GOGGLES

DUST MASKS

- All have an adjustable metal nose clip for a custom fit
- NEOMASK features Neoprene. It is reusable and washable

| PART # | DESCRIPTION | CASE QTY. |
|---------|---------------------------------|-----------|
| 85-6320 | N-95 RESPIRATOR (20 per BOX) | 12 boxes |
| 85-6330 | N-95 EXHALE VALVE (10 per BOX) | 12 boxes |
| 85-6400 | ECONOMY DUST MASK (50 per BOX) | |
| 85-6100 | MULTI-PURPOSE MASK (NEOMASK) | 10 boxes |
| 85-6310 | Replacement Filters for NEOMASK | |

****85-6320, 85-6330, & 85-6400 ARE sold only per box**



N95 RESPIRATOR



ECONOMY MASK



N95 EXHALE VALVE



NEOMASK

WD-40 CANS

- Perfect for removing grime and lubricating moving parts
- Rust Release Penetrant removes stuck parts

| PART # | DESCRIPTION | CASE QTY. |
|-----------|--|-----------|
| WD40-8 | 8OZ. Super Straw Can | 12 |
| WD40-11 | 11OZ. Super Straw Can | 12 |
| 85-WD40 | 16OZ. Industrial Can | 12 |
| WD40-RR | 11OZ. Rust Release Penetrant | 6 |
| WD40-RR13 | 13OZ. Rust Release Penetrant with "FLEX" STRAW | 6 |



FIRST AID KITS

- ANSI CLASS A approved contents

| PART # | DESCRIPTION |
|---------|--|
| 85-8650 | ANSI APPROVED FIRST AID KIT FOR 25 PEOPLE (PLASTIC CASE) |
| 85-8655 | 101PC SOFT BAG FIRST AID KIT |



FIRST AID KIT FOR 25PEOPLE



SOFT BAG FIRST AID KIT

SAFETY & WEATHER

RAIN SUITS

- Polyester lined raingear with an outer PVC coating

| PART # | SIZE | DESCRIPTION |
|---------|----------------------|--------------------------|
| 87-0100 | M | 3 PIECE YELLOW RAIN SUIT |
| 87-0200 | L | 3 PIECE YELLOW RAIN SUIT |
| 87-0300 | XL | 3 PIECE YELLOW RAIN SUIT |
| 87-0400 | XXL | 3 PIECE YELLOW RAIN SUIT |
| 87-0500 | XXXL | 3 PIECE YELLOW RAIN SUIT |
| 87-1100 | M | 2 PIECE YELLOW RAIN COAT |
| 87-1200 | L | 2 PIECE YELLOW RAIN COAT |
| 87-1300 | XL | 2 PIECE YELLOW RAIN COAT |
| 87-1400 | XXL | 2 PIECE YELLOW RAIN COAT |
| 87-1500 | XXXL | 2 PIECE YELLOW RAIN COAT |
| 87-1510 | M | 3 PIECE LIME RAIN SUIT |
| 87-1520 | L | 3 PIECE LIME RAIN SUIT |
| 87-1530 | XL | 3 PIECE LIME RAIN SUIT |
| 87-1540 | XXL | 3 PIECE LIME RAIN SUIT |
| 87-1550 | XXXL | 3 PIECE LIME RAIN SUIT |
| 87-1600 | ONE SIZE FITS ALL | VINYL RAIN PONCHO |



RAINSUIT

Lime Green rainsuit has reflective stripes. Rainsuit includes the jacket, pants, & hood



RAINCOAT

2Pc. Raincoat just includes the jacket and pants

PLAIN TOE PVC RAIN BOOTS

| PART# | SIZE# | PAIRS per BOX |
|---------|-------|---------------|
| 87-1700 | 6 | 6 |
| 87-1800 | 7 | 6 |
| 87-1900 | 8 | 6 |
| 87-2000 | 9 | 6 |
| 87-2100 | 10 | 6 |
| 87-2200 | 11 | 6 |
| 87-2300 | 12 | 6 |
| 87-2400 | 13 | 6 |
| 87-2450 | 14 | 6 |



SILVER TARPS

- Washable polyethylene material with aluminum grommets

| PART # | SIZE |
|---------|-------------|
| 87-3450 | 9FT x 12FT |
| 87-3500 | 10FT x 12FT |
| 87-3600 | 12FT x 16FT |
| 87-3700 | 16FT x 20FT |
| 87-3800 | 18FT x 24FT |
| 87-3810 | 20FT x 20FT |
| 87-3850 | 20FT x 30FT |
| 87-3870 | 20FT x 40FT |



****10MIL Thick**
Water, UV, and mold resistant

SAFETY & WEATHER

UTILITY BLUE TARPS

- Washable polyethylene material with aluminum grommets

| PART # | SIZE |
|---------|-----------|
| 87-2600 | 6' x 8' |
| 87-2700 | 8' x 10' |
| 87-2800 | 9' x 12' |
| 87-2820 | 10' x 12' |
| 87-2850 | 10' x 20' |
| 87-2900 | 12' x 16' |
| 87-2920 | 12' x 20' |
| 87-2950 | 12' x 24' |
| 87-3000 | 16' x 20' |
| 87-3100 | 18' x 24' |
| 87-3110 | 20' x 20' |
| 87-3120 | 20' x 24' |
| 87-3150 | 20' x 30' |
| 87-3180 | 20' x 40' |
| 87-3200 | 26' x 40' |
| 87-3250 | 30' x 30' |
| 87-3350 | 30' x 60' |
| 87-3400 | 40' x 60' |



****5MIL THICK**
Water, UV, and mold resistant

BLACK MESH TARPS

- Washable polyethylene material with aluminum grommets

| PART# | SIZE |
|---------|--------------------------|
| 87-5150 | 6' x 8' |
| 87-5180 | 6' x 10' |
| 87-5200 | 8' x 10' |
| 87-5230 | 8' x 12' |
| 87-5250 | 10' x 12' |
| 87-5280 | 10' x 20' |
| 87-5300 | 12' x 16' |
| 87-5350 | 12' x 20' |
| 87-5380 | 16' x 20' |
| 87-5400 | 16' x 24' |
| 87-5500 | 20' x 30' |
| 87-5520 | 6' x 50' GREEN MESH TARP |



****70% Shade**
Water, UV, and mold resistant

POLYPROPYLENE COVERS

- Keeps your pallets and shoes dry
- Pallet covers are only sold in case quantities (50 covers per case)

| PART # | DESCRIPTION |
|---------|---|
| 87-3900 | 51" x 49" x 73" (Standard) Pallet Cover |
| 85-6040 | Disp. Shoe Covers (Sold as 300 covers per case) |



SAFETY & WEATHER

RATCHET TIE DOWN STRAPS

- Durable J hook design for maximum holding strength
- Mildew, Mold & UV resistant webbing

| PART # | DESCRIPTION |
|---------|--------------------------------------|
| 85-8620 | 1" x 15' STRAP (CAMOUFLAGE) |
| 85-8630 | 4PC. 1" x 15' STRAP SET (ORANGE RED) |
| 85-8640 | 2" x 20' STRAP (ORANGE RED) |



1" = 1500 LB. Rating
2" = 4500 LB. Rating

NYLON BUCKLE STRAPS

- Mildew, Mold & UV resistant nylon webbing strap

| PART # | LENGTH | COLOR |
|---------|--------|--------|
| 87-4100 | 3' | GREEN |
| 87-4200 | 4' | RED |
| 87-4300 | 6' | YELLOW |
| 87-4400 | 8' | BROWN |
| 87-4500 | 10' | BLUE |
| 87-4600 | 12' | BLACK |



QUICK RELEASE
ZINC DIE CAST
BUCKLE

RUBBER TARP STRAPS

- Premium Rubber material with excellent stretch ability

| PART # | LENGTH |
|---------|--------|
| 87-4800 | 15" |
| 87-4900 | 21" |
| 87-5000 | 31" |
| 87-5100 | 41" |



STEEL HOOKS
for strong holds

SEINE TWINES

- Twisted nylon twine. Knots tighten with every use

| PART # | WEIGHT | COLOR | QTY PER CASE |
|---------|--------|--------|--------------|
| 85-8204 | 4 OZ. | GREEN | 48 |
| 85-8208 | 8 OZ. | GREEN | 24 |
| 85-8216 | 16 OZ. | GREEN | 12 |
| 85-8300 | 4 OZ. | ORANGE | 48 |
| 85-8308 | 8 OZ. | ORANGE | 24 |
| 85-8316 | 16 OZ. | ORANGE | 12 |
| 85-8400 | 4 OZ. | PINK | 48 |
| 85-8408 | 8 OZ. | PINK | 24 |
| 85-8416 | 16 OZ. | PINK | 12 |
| 85-8500 | 4 OZ. | YELLOW | 48 |
| 85-8508 | 8 OZ. | YELLOW | 24 |
| 85-8516 | 16 OZ. | YELLOW | 12 |



4OZ. = 250 FT. length
8OZ. = 500 FT. length
16OZ. = 1000 FT. length

SAFETY & WEATHER

POLY TRUCK ROPES

- 3 strand twisted polypropylene material
- Mold, Mildew, Rot, Oil, and UV resistant

| PART # | SIZE | COLOR |
|---------|-------------|----------------|
| 85-7700 | 3/8" x 50' | BLACK & ORANGE |
| 85-7800 | 3/8" x 100' | BLACK & ORANGE |
| 85-7900 | 3/8" x 600' | BLACK & ORANGE |
| 85-8000 | 1/2" x 50' | BLACK & ORANGE |
| 85-8100 | 1/2" x 100' | BLACK & ORANGE |
| 85-8200 | 1/2" x 600' | BLACK & ORANGE |
| 85-8550 | 1/4" x 50' | YELLOW POLY |
| 85-8580 | 1/4" x 100' | YELLOW POLY |
| 85-8600 | 1/4" x 600' | YELLOW POLY |



Meets California Highway Patrol safety standards
****YELLOW POLY ROPE comes with a spool holder**

MARKING PAINTS

- Waterbased long lasting paint formula
- Makes vivid markings and does not harm grass
- Meets VOC (volatile organic compound) standards
- 17OZ. NET FILL WEIGHT (20OZ. SIZED CANS) except for the Galvanized Primer paint which is a 15OZ. Fill weight
- Inverted spray tip style

| PART # | COLOR |
|---------|------------------------|
| 82-9700 | BLACK SURVEY |
| 82-9800 | SAFETY WHITE |
| 82-9810 | PURPLE |
| 82-9820 | FLOURESCENT RED |
| 82-9830 | FLOURESCENT ORANGE |
| 82-9840 | FLOURESCENT GREEN |
| 82-9850 | FLOURESCENT YELLOW |
| 82-9860 | FLORESCENT BLUE |
| 82-9870 | FLOURESCENT PINK |
| 82-9600 | CLEAR Solvent Based |
| 82-9885 | COLD GALVANIZED PRIMER |
| 82-9890 | 11" SPOT MARKER |
| 82-9990 | 28" MARKING STICK |



COLORED Marking Paint come as 12 cans per case
Galvanized Marking Paint come as 6 cans per case.
****Galvanized Primer** paint adds a zinc surface to prevent rust and cracks on steel surfaces



28" MARKING STICK

SPRAY PAINTS

- General purpose enamel spray paint
- Dries in minutes

| PART # | COLOR |
|---------|--------------|
| 82-9610 | FLAT BLACK |
| 82-9615 | FLAT WHITE |
| 82-9620 | GLOSSY WHITE |
| 82-9625 | GRAY |
| 82-9630 | BROWN |

SAFETY & WEATHER

COVERALL CRAWLSUITS

- Perfect for keeping your body clean in dirty environments

| PART # | SIZE |
|---------|---------|
| 85-7610 | XLARGE |
| 85-7620 | 2XLARGE |



CORDED EARPLUGS

- Keep your ears safe with a NRR 32db sound rating
- Yellow and Red laser light color
- Only sold in a box of 100 earplugs

| PART # | DESC. |
|---------|----------------|
| 85-7050 | CORDED EARPLUG |



LUMBER CRAYONS

- Weather and fade resistant crayon formula
- Ideal for marking lumber, masonry, posts, and etc.
- Only sold in multiples of 12

| PART # | COLOR |
|---------|--------|
| 82-9910 | RED |
| 82-9920 | BLACK |
| 82-9930 | BLUE |
| 82-9940 | YELLOW |



INDUSTRIAL SPONGE

- Polyester based sponge with super absorbent material to hold 3X its weight

| PART # | DESCRIPTION |
|---------|---------------------------|
| 83-2200 | INDUSTRIAL CLEANUP SPONGE |



TIRE HAND PUMP

- Single cylinder pump design

| PART # | DESCRIPTION |
|---------|---------------------------------|
| 83-2000 | 20" Steel Barrel Tire Hand Pump |



HOSE CLAMPS

- Stainless Steel band is corrosion resistant
- Perfect for preventing flow leakage in pipes

| PART # | SIZE | MIN DIA. | MAX DIA. |
|---------|------|----------|----------|
| 86-0050 | #4 | 7/32" | 5/8" |
| 86-0100 | #6 | 5/16" | 3/4" |
| 86-0200 | #8 | 7/16" | 1" |
| 86-0300 | #10 | 1/2" | 1-1/16" |
| 86-0400 | #12 | 1/2" | 1-1/4" |
| 86-0500 | #16 | 11/16" | 1-1/2" |
| 86-0600 | #20 | 3/4" | 1-3/4" |
| 86-0700 | #24 | 1" | 2" |
| 86-0800 | #28 | 1-1/4" | 2-1/4" |
| 86-0900 | #32 | 1-1/2" | 2-1/2" |
| 86-1000 | #36 | 1-3/4" | 2-3/4" |
| 86-1100 | #40 | 2" | 3" |
| 86-1200 | #44 | 2-1/4" | 3-1/4" |
| 86-1300 | #48 | 2-1/2" | 3-1/2" |
| 86-1400 | #52 | 2-3/4" | 3-3/4" |
| 86-1500 | #56 | 3" | 4" |
| 86-1600 | #64 | 2-1/2" | 4-1/2" |
| 86-1700 | #72 | 3" | 5" |
| 86-1800 | #80 | 3-1/2" | 5-1/2" |
| 86-1900 | #88 | 4" | 6" |
| 86-2000 | #96 | 4-1/2" | 6-1/2" |
| 86-2100 | #104 | 5" | 7" |
| 86-2200 | #128 | 6-1/2" | 8-1/2" |



****ONLY SOLD in boxes of 10**

PVC PIPE CUTTERS

- Heat-treated steel blade with grounded filed teeth

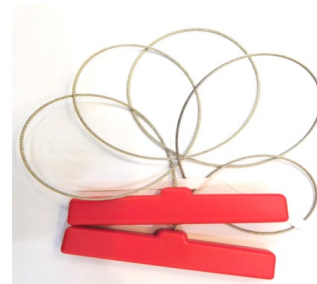
| PART # | DESCRIPTION (MAX CUT DIA.) |
|----------|-------------------------------------|
| 16-0012 | 12" PVC SAW |
| 16-1012 | 12" SAW REPLACEMENT BLADE |
| 16-0018 | 18" PVC SAW |
| 16-1018 | 18" SAW REPLACEMENT BLADE |
| 16-2008 | 8" PULL SAW with ORANGE HANDLE |
| 16-2008B | Replacement Blade for 16-2008 |
| 16-2012 | 12" PULL SAW with ORANGE HANDLE |
| 16-2012B | Replacement Blade for 16-2012 |
| 83-1600 | PREMIUM PVC PIPE CUTTER (1-5/8") |
| 83-1700 | REPLACEMENT BLADE for 83-1600 |
| 83-1800 | PREMIUM PVC PIPE CUTTER (2-5/8") |
| 83-1900 | REPLACEMENT BLADE for 83-1800 |
| 16-3700 | ABS PLASTIC PIPE & HOSE CUTTER (1") |
| 16-5158 | PRO PVC PIPE CUTTER (1-5/8") |
| 19-4036 | 36" WIRE CABLE SAW |



PVC SAW (16-0012, 16-0018)



PULL SAW with ORANGE HANDLE



WIRE CABLE SAW

PLUMBING

PIPE CUTTER Variations:



PREMIUM PVC CUTTER (#16-3700)



PRO PVC PIPE CUTTER (#16-5158)



ABS PLASTIC CUTTER (#16-3700)

TEST GAUGES

- Available in three variations: Lower Mount Assembly (3/4" FPT, 3/4" FHT), Test Gauge Only (1/4" MPT) & Liquid Filled Gauges (1/4" MPT)

| PART # | MEASUREMENT RANGE | VARIATION |
|---------|-------------------|-----------------------------|
| 83-0100 | 0-15 PSI | ASSEMBLY |
| 83-0200 | 0-30 PSI | ASSEMBLY |
| 83-0300 | 0-60 PSI | ASSEMBLY |
| 83-0400 | 0-100 PSI | ASSEMBLY |
| 83-0500 | 0-300 PSI | HOSE BIB (Water Test Gauge) |
| 83-0600 | 0-15 PSI | TEST GAUGE ONLY |
| 83-0700 | 0-30 PSI | TEST GAUGE ONLY |
| 83-0800 | 0-60 PSI | TEST GAUGE ONLY |
| 83-0900 | 0-100 PSI | TEST GAUGE ONLY |
| 83-0950 | 0-200 PSI | TEST GAUGE ONLY |
| 83-1000 | 0-15 PSI | LIQUID FILLED |
| 83-1100 | 0-30 PSI | LIQUID FILLED |
| 83-1200 | 0-60 PSI | LIQUID FILLED |
| 83-1300 | 0-100 PSI | LIQUID FILLED |
| 83-1350 | 0-160 PSI | LIQUID FILLED |
| 83-1400 | 0-200 PSI | LIQUID FILLED |
| 83-1500 | 0-300 PSI | LIQUID FILLED |



With ASSEMBLY



Item #83-0500



LIQUID FILLED GAUGE



TEST GAUGE ONLY

HEAVY DUTY METER KEY

- Tool steel T-shaped handle turns with high torque
- 3/4" opening fits most meter boxes

| PART # | DESCRIPTION |
|---------|--------------------------------|
| 89-6400 | 32" HEAVY DUTY Water Meter Key |



PLUMBING

4WAY SILLCOCK KEY

- Alloy Steel key that fits square stems sized: 1/4", 5/16", 9/32", and 11/32"



| PART # | DESCRIPTION |
|---------|-----------------------------|
| 83-2260 | 4WAY UNIVERSAL SILLCOCK KEY |

TRIGGER SPRAY BOTTLE

- 32OZ. Capacity bottle with a continuous neck finish
- Trigger sprayer has an adjustable spray pattern



| PART # | DESCRIPTION |
|---------|---|
| 83-2250 | 32OZ Spray Bottle with Adjustable STREAM Spray Head |

PIPE TAPS

- High Carbon Steel construction with Square End shank

- Flutes allow chips to collect
- Right Hand cutting direction

| PART # | TAP SIZE | THREADS PER INCH |
|---------|----------|------------------|
| 88-0018 | 1/8" | 27 |
| 88-0014 | 1/4" | 18 |
| 88-0038 | 3/8" | 18 |
| 88-0012 | 1/2" | 14 |
| 88-0034 | 3/4" | 14 |
| 88-0010 | 1" | 11.5 |
| 88-0114 | 1-1/4" | 11.5 |
| 88-0112 | 1-1/2" | 11.5 |
| 88-0200 | 2" | 11.5 |



SPIRAL SCREW EXTRACTORS

- High Carbon Steel construction with Square End shank

- Spiral flute removes damaged screws and bolts

| PART # | EXTRACTOR SIZE | DRILL SIZE |
|---------|----------------|------------|
| 88-1000 | #1 SPIRAL | 5/64" |
| 88-2000 | #2 SPIRAL | 7/64" |
| 88-3000 | #3 SPIRAL | 5/32" |
| 88-4000 | #4 SPIRAL | 1/4" |
| 88-5000 | #5 SPIRAL | 19/64" |
| 88-6000 | #6 SPIRAL | 13/32" |
| 88-7000 | #7 SPIRAL | 17/32" |
| 88-8000 | #8 SPIRAL | 13/16" |
| 88-9000 | #9 SPIRAL | 1-1/16" |



PLUMBING

TUBING CUTTERS

- Cuts Copper/EMT, Stainless Steel, & PVC tubes
- Interchangeable cutting wheels

| PART # | DESCRIPTION |
|----------|---|
| 83-1114 | 1/8" ...1-1/4" Copper/EMT Tubing Cutter |
| 83-1112 | 1/4" ...1-1/2" Copper/EMT Tubing Cutter |
| 83-1158 | 1/8" ...1-5/8" Copper/EMT Tubing Cutter |
| 83-1258 | 1/4" ...2-5/8" Copper/EMT Tubing Cutter |
| 83-1114W | REPLACEMENT WHEEL for 83-1114 |
| 83-1112W | REPLACEMENT WHEEL for 83-1112 |
| 83-1158W | REPLACEMENT WHEEL for 83-1158 |
| 83-1258W | REPLACEMENT WHEEL for 83-1258 |
| 83-1118 | 1/8" ...1-1/8" Copper/EMT Mini Cutter |
| 83-1012 | 1/2" Copper/EMT Auto Tubing Cutter |
| 83-1034 | 3/4" Copper/EMT Auto Tubing Cutter |

- Auto tubing cutters automatically tightens and cuts for each turn around the tube



TUBING CUTTER



AUTO TUBING CUTTER

PIPE WRENCHES

- Rounded, I-beam welded handle prevents slippage during use and ensures user comfort
- Floating hook jaw design delivers outstanding grip
- Adjustment nut allows for instant jaw adjustments

| PART # | DESCRIPTION |
|---------|----------------------------------|
| 82-2600 | 10" Heavy Duty (Steel) |
| 82-2700 | 14" Heavy Duty (Steel) |
| 82-2800 | 18" Heavy Duty (Steel) |
| 82-2900 | 24" Heavy Duty (Steel) |
| 82-3000 | 36" Heavy Duty (Steel) |
| 82-3100 | 14" Offset Heavy Duty (Steel) |
| 82-3200 | 18" Offset Heavy Duty (Steel) |
| 82-4500 | 8" STANDARD (Steel) |
| 82-4600 | 10" STANDARD (Steel) |
| 82-4700 | 14" STANDARD (Steel) |
| 82-4800 | 18" STANDARD (Steel) |
| 82-4900 | 24" STANDARD (Steel) |
| 82-3300 | 10" Heavy Duty (Aluminum) |
| 82-3400 | 14" Heavy Duty (Aluminum) |
| 82-3500 | 18" Heavy Duty (Aluminum) |
| 82-3600 | 24" Heavy Duty (Aluminum) |
| 82-3700 | 36" Heavy Duty (Aluminum) |
| 82-3800 | 14" Offset Heavy Duty (Aluminum) |
| 82-3900 | 18" Offset Heavy Duty (Aluminum) |
| 82-5000 | 14" STANDARD (Aluminum) |
| 82-5100 | 18" STANDARD (Aluminum) |
| 82-5200 | 24" STANDARD (Aluminum) |
| 82-5300 | 36" STANDARD (Aluminum) |
| 82-5400 | 48" STANDARD (Aluminum) |



ALUMINUM WRENCH



STEEL WRENCH

POWER TOOL ACCESSORIES

HOLE SAWS

- Shatterproof and shock resistant Steel Alloy body
- Cobalt steel welded cutting edge
- Variable pitched teeth design on bi-metal hole saws
- Side cutouts allow for effortless chip, debris and plug removal

| DIA. | BI-METAL Part # | CARBIDE TIPPED Part # | CARBIDE GRIT Part # |
|----------|--------------------|--------------------------|------------------------|
| 9/16" | 04-1014 | | |
| 5/8" | 04-1016 | | |
| 11/16" | 04-1017 | | |
| 3/4" | 04-1019 | 04-6019 | 04-7019 |
| 13/16" | 04-1021 | | |
| 7/8" | 04-1022 | 04-6022 | 04-7022 |
| 15/16" | 04-1024 | 04-6024 | |
| 1" | 04-1025 | 04-6025 | 04-7025 |
| 1-1/16" | 04-1027 | | |
| 1-1/8" | 04-1028 | 04-6028 | 04-7028 |
| 1-3/16" | 04-1030 | | |
| 1-1/4" | 04-1032 | 04-6032 | 04-7032 |
| 1-5/16" | 04-1033 | | |
| 1-3/8" | 04-1035 | 04-6035 | 04-7035 |
| 1-7/16" | 04-1037 | 04-6037 | |
| 1-1/2" | 04-1038 | 04-6038 | 04-7038 |
| 1-9/16" | 04-1040 | | |
| 1-5/8" | 04-1041 | 04-6041 | |
| 1-11/16" | 04-1043 | | |
| 1-3/4" | 04-1044 | 04-6044 | 04-7044 |
| 1-13/16" | 04-1046 | 04-6046 | |
| 1-7/8" | 04-1048 | 04-6048 | |
| 2" | 04-1051 | 04-6051 | 04-7051 |
| 2-1/16" | 04-1052 | | |
| 2-1/8" | 04-1054 | 04-6054 | 04-7054 |
| 2-1/4" | 04-1057 | 04-6057 | 04-7057 |
| 2-5/16" | 04-1059 | | |
| 2-3/8" | 04-1060 | 04-6060 | 04-7060 |
| 2-1/2" | 04-1064 | 04-6064 | 04-7064 |
| 2-9/16" | 04-1065 | 04-6065 | |
| 2-5/8" | 04-1067 | 04-6067 | |
| 2-3/4" | 04-1070 | 04-6070 | |
| 2-7/8" | 04-1073 | 04-6073 | |
| 3" | 04-1076 | 04-6076 | 04-7076 |
| 3-1/8" | 04-1079 | 04-6079 | |
| 3-1/4" | 04-1083 | 04-6083 | |
| 3-3/8" | 04-1086 | 04-6086 | |
| 3-1/2" | 04-1089 | 04-6089 | |
| 3-5/8" | 04-1092 | 04-6092 | 04-7092 |
| 3-3/4" | 04-1095 | 04-6095 | |
| 3-7/8" | 04-1098 | 04-6098 | |
| 4" | 04-1102 | 04-6102 | 04-7102 |



Bi-Metal Holesaw is made for cutting 2x4 wood planks with a 1-1/2" cutting depth.



CARBIDE TIPPED Holesaw cuts wood, plastic, fiberglass, copper, brass, and iron with a 1-3/8" cutting depth. Cuts faster than a bimetal holesaw



CARBIDE GRIT Holesaw cuts stone, brick, and concrete. 1-1/2" cutting depth

POWER TOOL ACCESSORIES

HOLE SAWS (MORE SIZES)

- Shatterproof and shock resistant Steel Alloy body
- Cobalt steel welded cutting edge
- Variable pitched teeth design on bi-metal hole saws
- Side cutouts allow for effortless chip, debris and plug removal

| DIA. | BI-METAL Part # | CARBIDE TIPPED Part # | CARBIDE GRIT Part # |
|--------|-----------------|-----------------------|---------------------|
| 4-1/8" | 04-1105 | 04-6105 | 04-7105 |
| 4-1/4" | 04-1108 | 04-6108 | |
| 4-3/8" | 04-1111 | 04-6111 | |
| 4-1/2" | 04-1114 | 04-6114 | |
| 4-3/4" | 04-1121 | 04-6121 | |
| 5" | 04-1127 | 04-6127 | |
| 5-1/4" | 04-1133 | 04-6133 | |
| 5-1/2" | 04-1140 | 04-6140 | |
| 5-3/4" | 04-1146 | 04-6146 | |
| 6" | 04-1152 | 04-6152 | |

HOLE SAW ARBORS & ACCESSORIES

- Heavy Duty Steel Alloy material
- SCREW LOCK requires turning for locking
- PUSH LOCK uses a slider plate for locking
- Designed to make working with hole saws easier by fastening the hole saw and pilot drill to the power drill machine

| PART # | DESCRIPTION |
|---------|---|
| 04-9002 | 7/16" HEX Shank Arbor (fits 1-1/4"...6")-SCREW LOCK |
| 04-9004 | 3/8" HEX Shank Arbor (fits 1-1/4"...6")-PUSH LOCK |
| 04-9005 | 1/4" TRIANGLE HEX Shank Arbor (fits 9/16"...1-1/8") |
| 04-9006 | 3/8" HEX Shank Arbor (fits 9/16"...1-1/8") |
| 04-9007 | 7/16" HEX Shank Arbor (fits 9/16"...1-1/8") |
| 04-9008 | 1/4" QUICK CHANGE HEX Shank Arbor (fits 9/16"...1-1/8") |
| 04-9016 | 1/2" SDS shank Arbor (fits 9/16"...1-1/8") |
| 04-9017 | 5/8" SDS shank Arbor (fits 9/16"...1-1/8") |
| 04-9080 | Arbor Adapter |
| 04-9014 | Long Pilot Bit (1/4" x 4-1/4") |
| 04-9015 | Short Pilot Bit (1/4" x 3-1/4") |
| 04-9090 | 5-1/2" LENGTH x 7/16" HEX Extension Bar |
| 04-9091 | 12" LENGTH x 7/16" HEX Extension Bar |
| 04-9019 | CARBIDE TIPPED PILOT DRILL |



#04-9002 SCREW LOCK



#04-9004 PUSH LOCK



04-9006, 04-9007, 04-9005



SDS shank Arbor



ARBOR ADAPTER



PILOT DRILL BIT



QUICK CHANGE Shank Arbor

POWER TOOL ACCESSORIES

HOLE SAW SETS

- Sets of bimetal hole saws are sold in heavy duty plastic injection molded cases

| PART # | DESCRIPTION |
|---------|--|
| 04-9103 | Lock Installation Kit (3 Pieces) |
| 04-9107 | Mechanic's Kit (7 Pieces) |
| 04-9108 | Electrician's Kit (8 Pieces) |
| 04-9111 | Journeyman's Maintenance Kit (11 Pieces) |
| 04-9114 | Industrial Maintenance Kit (14 Pieces) |
| 04-9115 | Master Electrician's Kit (16 Pieces) |
| 04-9120 | Master Industrial Kit |
| 04-9308 | Plumber's Kit (8 Pieces) |
| 04-9508 | Locksmith's Kit (8 Pieces) |



HOLE SAW SET CONTENTS:

| PART # | KIT NAME | CONTENT (BIMETAL HOLES AW SIZES & ARBORS) |
|---------|------------------------------|---|
| 04-9103 | LOCK INSTALLATION KIT | 1", 2-1/8" & ARBOR ADAPTER NUT (3PC) |
| 04-9107 | MECHANIC'S KIT | 7/8", 1", 1-1/8", 1-1/4", 1-1/2", HEX Shank ARBOR & ARBOR ADAPTER (7PC) |
| 04-9108 | ELECTRICIAN'S KIT | 7/8", 1-1/8", 1-3/8", 1-3/4", 2", 2-1/2", TWO HEX Shank ARBORS & ONE PILOT DRILL BIT (8PC) |
| 04-9111 | JOURNEYMAN'S MAINTENANCE KIT | 3/4", 7/8", 1-1/8", 1-3/8", 1-1/2", 1-3/4", 2", 2-1/4", 2-1/2" TWO HEX Shank ARBORS & ONE PILOT DRILL BIT (11PC) |
| 04-9114 | INDUSTRIAL MAINTENANCE KIT | 3/4", 7/8", 1", 1-1/4", 1-3/8", 1-1/2", 1-3/4", 2", 2-1/4", 2-1/2", 3" TWO HEX Shank ARBORS & ONE PILOT DRILL BIT (14PC) |
| 04-9115 | MASTER ELECTRICIAN'S KIT | 7/8", 1-1/8", 1-3/8", 1-1/2", 1-3/4", 2", 2-1/4", 2-1/2", 3", 3-5/8", 4-1/8", 4-1/2" THREE HEX Shank ARBORS, ONE PILOT DRILL BIT & 12" EXTENSION BAR (16PC) |
| 04-9120 | MASTER INDUSTRIAL KIT | 3/4", 7/8", 1-1/8", 1-3/8", 1-1/2", 1-3/4", 2", 2-1/4", 2-1/2", 3", 3-1/4", 3-5/8", 4-1/8", 4-1/2" TWO HEX Shank ARBORS, ONE ARBOR ADAPTER, ONE PILOT DRILL BIT & 12" Extension Bar |
| 04-9308 | PLUMBERS KIT | 3/4", 7/8", 1-1/8", 1-1/2", 1-3/4", 2-1/4", TWO HEX SHANK ARBORS, & ONE PILOT DRILL BIT |
| 04-9508 | LOCKSMITHS KIT | 7/8", 1", 1-1/4", 1-3/8", 1-3/4", 2-1/8", TWO HEX SHANK Arbors, & ONE PILOT DRILL BIT |

RECESSED LIGHTS HOLE SAWS

- Continuous tungsten carbide grit cutting edge cuts drywall, ceiling tile, and plaster that are found in recessed lights

- Open ended backing allow for effortless plug removal
- Dust bowl collects dust while drilling for a clean workplace

| PART # | SIZE (DIAMETER) |
|---------|---------------------|
| 04-3092 | 3-5/8" |
| 04-3108 | 4-1/4" |
| 04-3111 | 4-3/8" |
| 04-3140 | 5-1/2" |
| 04-3161 | 6-3/8" |
| 04-3168 | 6-5/8" |
| 04-3175 | 6-7/8" |
| 04-9098 | DUST BOWL PROTECTOR |



POWER TOOL ACCESSORIES

ABRASIVE CUTOFF WHEELS

- Contractor Grade abrasive wheel with aluminum oxide

| PART # | DIAMETER x ARBOR HOLE SIZE x THICKNESS & APPLICATION | CASE QTY. |
|---------|--|-----------|
| 82-0040 | 4" x 5/8" x 1/16" METAL WHEEL | 50 |
| 82-0050 | 4" x 3/8" x 1/32" METAL WHEEL | 50 |
| 82-0060 | 4-1/2" x 7/8" x 1/16" METAL WHEEL | 50 |
| 82-0100 | 7" x 5/8" x 1/8" METAL WHEEL | 50 |
| 82-0200 | 12" x 1" ARBOR METAL WHEEL | 30 |
| 82-0300 | 12" x 20MM ARBOR METAL WHEEL | 30 |
| 82-0400 | 14" x 1" ARBOR METAL WHEEL | 30 |
| 82-0500 | 14" x 20MM ARBOR METAL WHEEL | 30 |
| 82-0600 | 7" x 5/8" ARBOR MASONRY WHEEL | 30 |
| 82-0700 | 12" x 1" ARBOR MASONRY WHEEL | 30 |
| 82-0800 | 12" x 20MM ARBOR MASONRY WHEEL | 30 |
| 82-0900 | 14" x 1" ARBOR MASONRY WHEEL | 30 |
| 82-1000 | 14" x 20MM ARBOR MASONRY WHEEL | 30 |
| 82-1100 | 12" x 1" ARBOR DUCTILE IRON WHEEL | 30 |
| 82-1200 | 12" x 20MM ARBOR DUCTILE IRON WHEEL | 30 |
| 82-1300 | 14" x 1" ARBOR DUCTILE IRON WHEEL | 30 |
| 82-1400 | 14" x 20MM ARBOR DUCTILE IRON WHEEL | 30 |

- Ideal for cutting and grinding metals



DIAMOND BLADES

- Cuts through concrete or ductile iron like butter

| PART # | DESCRIPTION |
|-----------|--|
| 90-2004 | 4" CONCRETE DIAMOND BLADE |
| 90-2005 | 4-1/2" CONCRETE DIAMOND BLADE |
| 90-2007 | 7" CONCRETE DIAMOND BLADE |
| 90-2010 | 10" CONCRETE DIAMOND BLADE |
| 90-2012 | 12" CONCRETE DIAMOND BLADE |
| 90-2014 | 14" CONCRETE DIAMOND BLADE |
| 90-7040 | 4" GRANITE WET/DRY DIAMOND BLADE |
| 90-7045 | 4-1/2" GRANITE WET/DRY DIAMOND BLADE |
| VBA12321P | 12" x 1" ARBOR x 0.125" thick DIAMOND BLADE for DUCTILE IRON |
| VBA14321P | 14" x 1" ARBOR x 0.125" thick DIAMOND BLADE for DUCTILE IRON |



CIRCULAR SAW BLADES

- Carbide tipped cutting edge cuts wood, sheet metal, plastic, and fiberglass
- Thin Kerf design with heat vents makes these blades last longer

| PART # | SIZE |
|----------|--------------|
| TCT-5724 | 7-1/4" x 24T |
| TCT-0740 | 7-1/4" x 40T |
| TCT-1040 | 10" x 40T |
| TCT-1060 | 10" x 60T |



POWER TOOL ACCESSORIES

PORTABAND SAW BLADES

- 8% cobalt matrix HSS cutting edge with a steel alloy backing. Shatterproof and shock resistant teeth

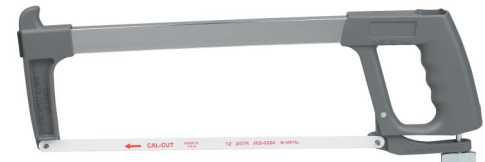
| PART # | SIZE |
|----------|------------------|
| PORT10 | 44-7/8" x 10T |
| PORT1014 | 44-7/8" x 10/14T |
| PORT14 | 44-7/8" x 14T |
| PORT1418 | 44-7/8" x 14/18T |
| PORT18 | 44-7/8" x 18T |
| PORT24 | 44-7/8" x 24T |



HACKSAW FRAMES

- Filed high speed steel cutting teeth

| PART # | DESCRIPTION |
|---------|---|
| 19-0001 | Deluxe High Tension Hacksaw (MADE IN USA) |
| 19-3006 | 6" Chrome Plated Mini Hacksaw |
| 19-1006 | 6" Mini Hacksaw Frame |
| 19-2006 | Hacksaw Replacement Blades for 19-3006 & 19-1006 MINI Hacksaw FRAMES (PRICED AS 10PCS per pouch) |
| 19-1012 | 12" WEDGE POINT HACKSAW |
| 19-2012 | REPLACEMENT BLADE FOR 19-1012 WEDGE POINT HACKSAW (PRICED AS 10PCS per PACK) |



#19-0001



#19-1006



#19-1012

LENOX PRODUCTS

| PART # | DESCRIPTION |
|-----------|--|
| 81-110R | LENOX 110R 12" x 10/14T (5 per pack) RECIP |
| 81-156R | LENOX 156R 12" x 6T (5 per pack) RECIP |
| 81-610R | LENOX 610R 6" x 10T (5 per pack) RECIP |
| 81-614R | LENOX 614R 6" x 14T (5 per pack) RECIP |
| 81-618R | LENOX 618R 6" x 18T (5 per pack) RECIP |
| 81-624R | LENOX 624R 6" x 24T (5 per pack) RECIP |
| 81-656R | LENOX 656R 6" x 6T (5 per pack) RECIP |
| 81-800RG | LENOX 800RG 8" GRIT (2 per pack) RECIP |
| 81-810R | LENOX 810R 8" x 10T (5 per pack) RECIP |
| 81-818R | LENOX 818R 8" x 18T (5 per pack) RECIP |
| 81-956R | LENOX 956R 9" x 6T (5 per pack) RECIP |
| 81-HSF12 | LENOX HSF12 12" PVC SAW |
| 81-HSF18 | LENOX HSF18 18" PVC SAW |
| 81-HSB12 | HSB12 12" PVC REPLACEMENT BLADE |
| 81-HSB18 | HSB18 18" PVC REPLACEMENT BLADE |
| 81-V218HE | LENOX V218HE 12" x 18T HACKSAW BLADE (10 per pack) |
| 81-V224HE | LENOX V224HE 12" x 24T HACKSAW BLADE (10 per pack) |
| 81-V232HE | LENOX V232HE 12" x 32T HACKSAW BLADE (10 per pack) |



POWER TOOL ACCESSORIES

MASONRY DRILL BITS

- Carbide Tipped & heat-treated steel body for high shock resistance

| PART # | FINISH | DIAMETER x LENGTH |
|----------|-------------|-------------------|
| 54-183 | Black Oxide | 1/8" x 3" |
| 54-3164 | Black Oxide | 3/16" x 4" |
| 54-3166 | Black Oxide | 3/16" x 6" |
| 54-144 | Black Oxide | 1/4" x 4" |
| 54-146 | Black Oxide | 1/4" x 6" |
| 54-1412 | Black Oxide | 1/4" x 12" |
| 54-5164 | Black Oxide | 5/16" x 4" |
| 54-5166 | Black Oxide | 5/16" x 6" |
| 54-51612 | Black Oxide | 5/16" x 12" |
| 54-384 | Black Oxide | 3/8" x 4" |
| 54-386 | Black Oxide | 3/8" x 6" |
| 54-3812 | Black Oxide | 3/8" x 12" |
| 54-7166 | Black Oxide | 7/16" x 6" |
| 54-126 | Black Oxide | 1/2" x 6" |
| 54-1212 | Black Oxide | 1/2" x 12" |
| 54-9166 | Black Oxide | 9/16" x 6" |
| 54-586 | Black Oxide | 5/8" x 6" |
| 54-5812 | Black Oxide | 5/8" x 12" |
| 54-346 | Black Oxide | 3/4" x 6" |
| 54-3412 | Black Oxide | 3/4" x 12" |
| 54-3418 | Black Oxide | 3/4" x 18" |
| 54-786 | Black Oxide | 7/8" x 6" |
| 54-7812 | Black Oxide | 7/8" x 12" |
| 54-7818 | Black Oxide | 7/8" x 18" |
| 54-160 | Black Oxide | 1" x 6" |
| 54-112 | Black Oxide | 1" x 12" |
| 54-118 | Black Oxide | 1" x 18" |



BLACK OXIDE FINISH

ZINC FINISH

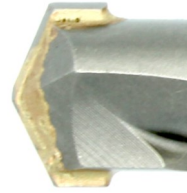
| PART # | FINISH | DIAMETER x LENGTH |
|---------|-------------|-------------------|
| 51-0001 | Zinc Plated | 1/8" x 3" |
| 51-0003 | Zinc Plated | 3/16" x 4" |
| 51-0004 | Zinc Plated | 1/4" x 4" |
| 51-0015 | Zinc Plated | 1/4" x 6" |
| 51-0006 | Zinc Plated | 5/16" x 4" |
| 51-0020 | Zinc Plated | 5/16" x 6" |
| 51-0048 | Zinc Plated | 3/8" x 4" |
| 51-0008 | Zinc Plated | 3/8" x 6" |
| 51-0009 | Zinc Plated | 7/16" x 6" |
| 51-0011 | Zinc Plated | 1/2" x 6" |
| 51-0012 | Zinc Plated | 9/16" x 6" |
| 51-0014 | Zinc Plated | 5/8" x 6" |
| 51-0030 | Zinc Plated | 3/4" x 6" |

POWER TOOL ACCESSORIES

ROTARY HAMMER SDS+ DRILL BITS

- Carbide Tipped & Heat-treated Alloy steel body for hammer drilling in brick, concrete, stucco, and masonry materials
- SDS+ shank allows for a sliding back and forth action in the drill chuck

| PART # | DIAMETER x LENGTH |
|---------|-------------------|
| 73-3010 | 3/16" x 4-1/2" |
| 73-3020 | 3/16" x 6-1/2" |
| 73-3025 | 3/16" x 9-1/2" |
| 73-3028 | 3/16" x 12-1/2" |
| 73-3029 | 7/32" x 6-1/2" |
| 73-3030 | 1/4" x 4-1/2" |
| 73-3040 | 1/4" x 6-1/4" |
| 73-3045 | 1/4" x 9" |
| 73-3048 | 1/4" x 12-1/2" |
| 73-3050 | 5/16" x 6-1/4" |
| 73-3055 | 5/16" x 9" |
| 73-3060 | 3/8" x 6-1/4" |
| 73-3065 | 3/8" x 9" |
| 73-3070 | 3/8" x 12-1/2" |
| 73-3075 | 3/8" x 18-1/2" |
| 73-3080 | 7/16" x 6-1/4" |
| 73-3084 | 7/16" x 12-1/2" |
| 73-3088 | 7/16" x 18-1/2" |
| 73-3090 | 1/2" x 6-1/2" |
| 73-3095 | 1/2" x 9" |
| 73-3100 | 1/2" x 12-1/2" |
| 73-3105 | 1/2" x 18-1/2" |
| 73-3110 | 9/16" x 6-1/2" |
| 73-3120 | 9/16" x 12-1/2" |
| 73-3125 | 9/16" x 18-1/2" |
| 73-3130 | 5/8" x 6-1/2" |
| 73-3135 | 5/8" x 9" |
| 73-3140 | 5/8" x 12-1/2" |
| 73-3145 | 5/8" x 18-1/2" |
| 73-3150 | 3/4" x 9" |
| 73-3160 | 3/4" x 12-1/2" |
| 73-3170 | 3/4" x 18-1/2" |
| 73-3180 | 7/8" x 9" |
| 73-3185 | 7/8" x 12-1/2" |
| 73-3190 | 7/8" x 18-1/2" |
| 73-3200 | 1" x 9" |
| 73-3210 | 1" x 12-1/2" |
| 73-3220 | 1" x 18-1/2" |



CARBIDE TIP



POWER TOOL ACCESSORIES

AUGER BITS

- Heat-treated steel body with an outlining spur
- Self-feed screw point eliminates the need for a pilot hole

| PART # | DIAMETER x LENGTH |
|---------|-------------------|
| 73-0002 | 3/8" x 7-1/2" |
| 73-0004 | 1/2" x 7-1/2" |
| 73-0007 | 5/8" x 7-1/2" |
| 73-0009 | 3/4" x 7-1/2" |
| 73-0010 | 7/8" x 7-1/2" |
| 73-0011 | 1" x 7-1/2" |
| 73-0012 | 1-1/8" x 7-1/2" |
| 73-0014 | 1-1/4" x 7-1/2" |
| 73-0016 | 1-3/8" x 7-1/2" |
| 73-0018 | 1-1/2" x 7-1/2" |
| 73-1020 | 1/2" x 18" |
| 73-1025 | 9/16" x 18" |
| 73-1030 | 5/8" x 18" |
| 73-1040 | 3/4" x 18" |
| 73-1050 | 7/8" x 18" |
| 73-1060 | 1" x 18" |
| 73-1070 | 1-1/8" x 18" |
| 73-1080 | 1-1/4" x 18" |
| 73-1090 | 1-3/8" x 18" |
| 73-1100 | 1-1/2" x 18" |

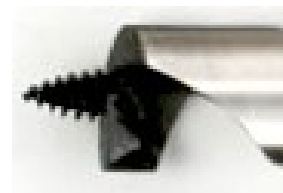


NAILBUSTER AUGER BITS

- Heat-treated steel body for a long lasting bit
- Self-feed screw point eliminates the need for a pilot hole

| PART # | DIAMETER x LENGTH |
|---------|-------------------|
| 73-2510 | 1/2" x 8" |
| 73-2530 | 5/8" x 8" |
| 73-2550 | 3/4" x 8" |
| 73-2570 | 7/8" x 8" |
| 73-2590 | 1" x 8" |
| 73-2600 | 1-1/8" x 8" |
| 73-2610 | 1-1/4" x 8" |
| 73-2620 | 1-3/8" x 8" |
| 73-2630 | 1-1/2" x 8" |
| 73-2030 | 3/8" x 18" |
| 73-2050 | 1/2" x 18" |
| 73-2070 | 5/8" x 18" |
| 73-2090 | 3/4" x 18" |
| 73-2100 | 7/8" x 18" |
| 73-2120 | 1" x 18" |
| 73-2130 | 1-1/8" x 18" |
| 73-2140 | 1-1/4" x 18" |
| 73-2150 | 1-3/8" x 18" |
| 73-2160 | 1-1/2" x 18" |

- Able to cut through nail embedded wood with no spur



NO SPUR



POWER TOOL ACCESSORIES

SPADE FLAT PADDLE BITS

- Contractor grade heat-treated carbon steel
- Double cutting flutes outlines the hole and eliminates splintering

- Central cutting point ensures self centering
- Cutting cavity and fish eye hole

| PART # | DIAMETER x LENGTH |
|----------|---|
| 71-0001 | 1/4" x 6" |
| 71-0002 | 5/16" x 6" |
| 71-0003 | 3/8" x 6" |
| 71-00035 | 7/16" x 6" |
| 71-0004 | 1/2" x 6" |
| 71-0005 | 9/16" x 6" |
| 71-0006 | 5/8" x 6" |
| 71-0007 | 11/16" x 6" |
| 71-0008 | 3/4" x 6" |
| 71-00085 | 13/16" x 6" |
| 71-0009 | 7/8" x 6" |
| 71-0010 | 15/16" x 6" |
| 71-0011 | 1" x 6" |
| 71-0013 | 1-1/8" x 6" |
| 71-0015 | 1-1/4" x 6" |
| 71-0016 | 1-3/8" x 6" |
| 71-0018 | 1-1/2" x 6" |
| 71-1601 | 1/4" x 16" |
| 71-1603 | 3/8" x 16" |
| 71-1604 | 1/2" x 16" |
| 71-1606 | 5/8" x 16" |
| 71-1608 | 3/4" x 16" |
| 71-1609 | 7/8" x 16" |
| 71-1610 | 15/16" x 16" |
| 71-1611 | 1" x 16" |
| 71-1613 | 1-1/8" x 16" |
| 71-1615 | 1-1/4" x 16" |
| 71-1616 | 1-3/8" x 16" |
| 71-1618 | 1-1/2" x 16" |
| 71-1040 | Six Piece 6" Set includes sizes: 3/8", 1/2", 5/8", 3/4", 7/8", & 1" |
| 71-1050 | 13 Piece 6" Set includes 1/4"...1" |



POWER TOOL ACCESSORIES

SELF-FEED DRILL BITS & ACCESSORIES

- Carbon Steel body with outlying spurs
- Self centering screw point eliminates the need for a pilot hole
- Comes with one hex key and a replaceable screw point
- 7/16" Hex Diameter opening for the extension bar

| PART # | DIAMETER |
|---------|----------|
| 70-3002 | 1" |
| 70-3003 | 1-1/8" |
| 70-3005 | 1-1/4" |
| 70-3010 | 1-3/8" |
| 70-3020 | 1-1/2" |
| 70-3030 | 1-3/4" |
| 70-3033 | 2" |
| 70-3035 | 2-1/8" |
| 70-3040 | 2-1/4" |
| 70-3060 | 2-9/16" |
| 70-3065 | 3" |
| 70-3070 | 3-5/8" |
| 70-3080 | 4-5/8" |



| PART # | DESCRIPTION |
|---------|---------------------------------------|
| 70-5010 | 5-1/2" Extension Bar |
| 70-5012 | 12" Extension Bar |
| 70-5018 | 18" Extension Bar |
| 70-5024 | 24" Extension Bar |
| 70-4100 | 1/4" Diameter Replacement Screw Point |
| 70-4200 | 3/8" Diameter Replacement Screw Point |

SILVER & DEMING DRILL BITS

- Heat-treated high speed steel construction
- 135° split point reduces wobbling
- Three machined flats on a 1/2" shank
- 6" OAL for use in drill presses or portable drills

| PART # | SIZE |
|---------|---------|
| 75-5010 | 9/16" |
| 75-5015 | 19/32" |
| 75-5020 | 5/8" |
| 75-5025 | 21/32" |
| 75-5030 | 11/16" |
| 75-5035 | 23/32" |
| 75-5040 | 3/4" |
| 75-5042 | 25/32" |
| 75-5045 | 13/16" |
| 75-5047 | 27/32" |
| 75-5050 | 7/8" |
| 75-5052 | 29/32" |
| 75-5055 | 15/16" |
| 75-5057 | 31/32" |
| 75-5060 | 1" |
| 75-5070 | 1-1/16" |
| 75-5080 | 1-1/8" |
| 75-5090 | 1-3/16" |
| 75-5100 | 1-1/4" |
| 75-5150 | 1-1/2" |



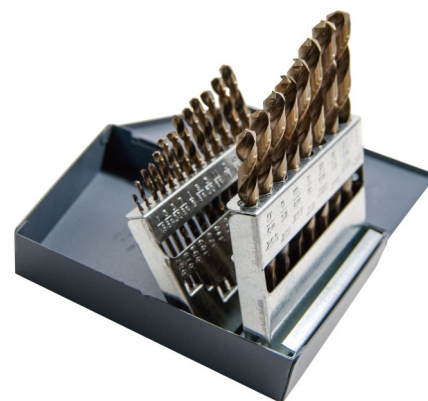
| PART # | DESCRIPTION |
|---------|---|
| 75-5800 | 8 Piece Set includes sizes: 9/16"...1" by the 16ths in a metal index case |
| 75-5808 | 8 Piece Jumbo Set includes sizes 1-1/16"...1-1/2" by the 16ths |
| 75-5813 | 13 Piece Set includes sizes: 17/32"...1" in a metal index case |

POWER TOOL ACCESSORIES

JOBBER LENGTH TWIST DRILL BITS

- Heat-treated high speed steel material
- 135° split point tip prevents “wobbling” and eliminates the need for a pilot hole
- COBALT drill bits last longer and drill faster
- Precision grounded from solid for exact dimensions
- Straight shank on sizes 11/64" and under. 3 Flats shank on sizes 3/16" and up

| BLACK & GOLD PART # | COBALT PART # | SIZE (Diameter) | OAL |
|---------------------|---------------|---------------------|--------|
| 56-2004 | 58-2004 | 1/16" | 1-7/8" |
| 56-2005 | 58-2005 | 5/64" | 2" |
| 56-2006 | 58-2006 | 3/32" | 2-1/4" |
| 56-2007 | 58-2007 | 7/64" | 2-5/8" |
| 56-2008 | 58-2008 | 1/8" | 2-3/4" |
| 56-2009 | 58-2009 | 9/64" | 2-7/8" |
| 56-2010 | 58-2010 | 5/32" | 3-1/8" |
| 56-2011 | 58-2011 | 11/64" | 3-1/4" |
| 56-2012 | 58-2012 | 3/16" | 3-1/2" |
| 56-2013 | 58-2013 | 13/64" | 3-5/8" |
| 56-2014 | 58-2014 | 7/32" | 3-3/4" |
| 56-2015 | 58-2015 | 15/64" | 3-7/8" |
| 56-2016 | 58-2016 | 1/4" | 4" |
| 56-2017 | 58-2017 | 17/64" | 4-1/8" |
| 56-2018 | 58-2018 | 9/32" | 4-1/4" |
| 56-2019 | 58-2019 | 19/64" | 4-3/8" |
| 56-2020 | 58-2020 | 5/16" | 4-1/2" |
| 56-2021 | 58-2021 | 21/64" | 4-5/8" |
| 56-2022 | 58-2022 | 11/32" | 4-3/4" |
| 56-2023 | 58-2023 | 23/64" | 4-7/8" |
| 56-2024 | 58-2024 | 3/8" | 5" |
| 56-2025 | 58-2025 | 25/64" | 5-1/8" |
| 56-2026 | 58-2026 | 13/32" | 5-1/4" |
| 56-2027 | 58-2027 | 27/64" | 5-3/8" |
| 56-2028 | 58-2028 | 7/16" | 5-1/2" |
| 56-2029 | 58-2029 | 29/64" | 5-5/8" |
| 56-2030 | 58-2030 | 15/32" | 5-3/4" |
| 56-2031 | 58-2031 | 31/64" | 5-7/8" |
| 56-2032 | 58-2032 | 1/2" | 6" |
| 56-4013 | 58-4013 | 13 Piece Set | |
| 56-4021 | 58-4021 | 21 Piece Set | |
| 56-4029 | 58-4029 | 29 Piece Set | |
| 56-4115 | 58-4115 | 115 Piece Drill Set | |
| 56-4025M | | 25 Piece Metric | |
| 56-4026AZ | | 26 Piece A...Z | |
| 56-4260 | | 60 Piece Wire Gauge | |



- 13 Piece Drill Set include sizes 1/16" to 1/4" by the 64ths increment
- 21 Piece Drill Set include sizes 1/16" to 1/4" by the 64ths and also 9/32" to 1/2" by the 32nds
- 29 Piece Drill Set include sizes 1/16" to 1/2" by the 64ths
- 115 Piece Drill Set include sizes 1/16" to 1/2" by the 64ths, #1 to #60, and A to Z letter sized drills
- 60 Pc. Wire Gauge set includes #1 to #60
- A..Z Drill Set includes 26 letter drills
- Metric Drill set includes 1MM...13MM by 0.5MM increments

POWER TOOL ACCESSORIES

RECIPROCATING SAW BLADES

- 8% cobalt matrix HSS cutting edge with a steel alloy backing for maximum strength
- Shatterproof and shock resistant saw blade
- Vinyl Pouch is packaged & Sold as 5pcs. per pouch for 3/4" wide blades. Demolition blades contain 2pcs. per pouch



PLASTER TEETH BLADE
have V-shaped teeth



SCROLL SAW BLADE has a
taper to fit into small spaces

Demolition Reciprocating Blades (7/8" Width)

| PART # | SIZE | Vinyl Pouch Part # |
|---------|-----------------------|--------------------|
| 03-7666 | 6" x 0.062" x 6T | 03-6666 |
| 03-7966 | 9" x 0.062" x 6T | 03-6966 |
| 03-7266 | 12" x 0.062" x 6T | 03-6266 |
| 03-7669 | 6" x 0.062" x 10/14T | 03-6669 |
| 03-7969 | 9" x 0.062" x 10/14T | 03-6969 |
| 03-7269 | 12" x 0.062" x 10/14T | 03-6269 |
| 03-7684 | 6" x 0.062" x 14T | 03-6684 |
| 03-7984 | 9" x 0.062" x 14T | 03-6984 |
| 03-7284 | 12" x 0.062" x 14T | 03-6284 |
| 03-7688 | 6" x 0.062" x 18T | 03-6688 |
| 03-7988 | 9" x 0.062" x 18T | 03-6988 |
| 03-7288 | 12" x 0.062" x 18T | 03-6288 |

Heavy-Duty Reciprocating Blades (3/4" Width)

| PART # | LENGTH x THICKNESS x TPI | Vinyl Pouch Part # |
|---------|-----------------------------|-----------------------|
| 03-7606 | 6" x 0.035" x 6T | 03-6606 |
| 03-7656 | 6" x 0.05" x 6T | 03-6656 |
| 03-7906 | 9" x 0.05" x 6T | 03-6906 |
| 03-7206 | 12" x 0.05" x 6T | 03-6206 |
| 03-7610 | 6" x 0.035" x 10T | 03-6610 |
| 03-7810 | 8" x 0.035" x 10T | 03-6810 |
| 03-7650 | 6" x 0.05" x 10T | 03-6650 |
| 03-7414 | 4" x 0.035" x 14T | 03-6414 |
| 03-7614 | 6" x 0.035" x 14T | 03-6614 |
| 03-7654 | 6" x 0.05" x 14T | 03-6654 |
| 03-7814 | 8" x 0.035" x 14T | 03-6814 |
| 03-7854 | 8" x 0.05" x 14T | 03-6854 |
| 03-7914 | 9" x 0.05" x 14T | 03-6914 |
| 03-7214 | 12" x 0.05" x 14T | 03-6214 |
| 03-7418 | 4" x 0.035" x 18T | 03-6418 |
| 03-7618 | 6" x 0.035" x 18T | 03-6618 |
| 03-7658 | 6" x 0.05" x 18T | 03-6658 |
| 03-7818 | 8" x 0.035" x 18T | 03-6818 |
| 03-7938 | 9" x 0.035" x 18T | 03-6938 |
| 03-7918 | 9" x 0.05" x 18T | 03-6918 |
| 03-7218 | 12" x 0.05" x 18T | 03-6218 |
| 03-7424 | 4" x 0.035" x 24T | 03-6424 |
| 03-7624 | 6" x 0.035" x 24T | 03-6624 |
| 03-7634 | 6" x 0.05" x 24T | 03-6634 |
| 03-7924 | 9" x 0.035" x 24T | 03-6924 |
| 03-7603 | 6" x 0.035" x 10/14T | 03-6603 |
| 03-7653 | 6" x 0.05" x 10/14T | 03-6653 |
| 03-7903 | 9" x 0.05" x 10/14T | 03-6903 |
| 03-7203 | 12" x 0.05" x 10/14T | 03-6203 |
| 03-7636 | 6" x Scroll Saw x 6T | 03-6636 |
| 03-7626 | 6" x Plaster x 6T | 03-6626 |

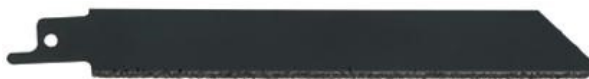
POWER TOOL ACCESSORIES

CARBIDE GRIT SAW BLADES

- Steel Alloy backing is shock resistant and shatterproof

| PART # | SIZE | PRICE EACH |
|---------|-----------------------------------|------------|
| 03-7600 | 6" Carbide Grit (Sold as 1/Pouch) | \$3.25 |
| 03-7800 | 8" Carbide Grit (Sold as 1/Pouch) | \$3.75 |

- Continuous carbide edge cuts brick, stone, and concrete



HACKSAW BLADES

- 12" overall length
- Shatterproof and shock resistant blade
- Welded Cobalt steel teeth for fast and clean cuts

| DESCRIPTION | PART # |
|-------------------------------|---------|
| 14T, Bi-Metal Steel | 02-0314 |
| 18T, Bi-Metal Steel | 02-0318 |
| 24T, Bi-Metal Steel | 02-0324 |
| 32T, Bi-Metal Steel | 02-0332 |
| 18T, High Carbon Steel (BLUE) | 02-2518 |
| 24T, High Carbon Steel (BLUE) | 02-2524 |
| 32T, High Carbon Steel (BLUE) | 02-2532 |

- Bi-Metal steel has a white steel alloy backing
- Carbon steel is great for cutting PVC, ABS plastic, non-ferrous metals, and wood



STEP DRILL BITS

- High Speed Steel material with a gold titanium finish
- Double flute design for balance & stability

| PART # | NO. OF STEPS | SIZE RANGE |
|---------|--------------|----------------------------|
| SB-338 | 3 STEPS | 1/4", 7/8", 1-1/8" |
| SB-1238 | 12 STEPS | 3/16" to 7/8" |
| SB-1314 | 13 STEPS | 1/8" to 1/2" |
| SB-838 | 8 STEPS | 9/16" to 1" |
| SB-938 | 9 STEPS | 1/4" to 3/4" |
| SB-1138 | 1 STEP | 7/8" Hole for 1/2" Conduit |
| SB-614 | 6 STEPS | 3/16" to 1/2" |
| SB-1012 | 5 STEPS | 7/8" to 1-3/8" |

- Self-starting center cutting point requires no pilot hole drilling



POWER TOOL ACCESSORIES

THIN WALL HOLE SAWS

- Shatterproof, shock resistant hole saw with 3/8" cutting depth & 1/4" shank
- COBALT steel cutting teeth with a steel alloy backing
- 8TPI teeth for fast cuts. STOP Shoulder prevents overdrilling
- Spring loaded ejector spring instantly removes debris and plug

| PART # | SIZE |
|---------|---|
| 03-3019 | 3/4" |
| 03-3022 | 7/8" |
| 03-3025 | 1" |
| 03-3028 | 1-1/8" |
| 03-3032 | 1-1/4" |
| 03-3035 | 1-3/8" |
| 03-3038 | 1-1/2" |
| 03-3003 | 3 PIECE SET includes 7/8", 1-1/8", 1-3/8" |



CARBIDE TIPPED HOLE CUTTERS

- Shatterproof, shock resistant hole cutter with 7/16" cutting depth
- COBALT steel cutting teeth with a steel alloy backing
- Carbide Tipped cutting edge makes clean cuts in sheet metal, stainless steel, angle iron, and copper
- Spring loaded ejector spring instantly removes debris and plug

| PART # | SIZE |
|---------|---------|
| 04-8019 | 3/4" |
| 04-8022 | 7/8" |
| 04-8025 | 1" |
| 04-8028 | 1-1/8" |
| 04-8030 | 1-3/16" |
| 04-8032 | 1-1/4" |
| 04-8035 | 1-3/8" |
| 04-8038 | 1-1/2" |
| 04-8044 | 1-3/4" |
| 04-8051 | 2" |
| 04-8054 | 2-1/8" |
| 04-8057 | 2-1/4" |
| 04-8060 | 2-3/8" |
| 04-8064 | 2-1/2" |
| 04-8067 | 2-5/8" |
| 04-8070 | 2-3/4" |
| 04-8076 | 3" |



SCREWDRIVING BITS

PHILLIPS INSERT BITS

- S-2 Shock Resistant steel with HRc 60 hardness
- 1/4" Hex Shank & Sold in bags of 50

| PART # | SIZE |
|---------|-----------------------|
| 05-P0 | #0 x 1" Bit |
| 05-P1 | #1 x 1" Bit |
| 05-P2 | #2 x 1" Bit |
| 05-P3 | #3 x 1" Bit |
| 05-PR1 | #1 x 1" REDUCED Bit |
| 05-PR2 | #2 x 1" REDUCED Bit |
| 05-P0-2 | #0 x 2" POWER Bit |
| 05-P1-2 | #1 x 2" POWER Bit |
| 05-P2-2 | #2 x 2" POWER Bit |
| 05-P3-2 | #3 x 2" POWER Bit |
| 05-P1-3 | #1 x 2-3/4" POWER Bit |
| 05-P2-3 | #2 x 2-3/4" POWER Bit |
| 05-P3-3 | #3 x 2-3/4" POWER Bit |
| 05-P1-4 | #1 x 3-1/2" POWER Bit |
| 05-P2-4 | #2 x 3-1/2" POWER Bit |
| 05-P3-4 | #3 x 3-1/2" POWER Bit |
| 05-P1-6 | #1 x 6" POWER Bit |
| 05-P2-6 | #2 x 6" POWER Bit |
| 05-P3-6 | #3 x 6" POWER Bit |
| 05-ALD | ACOUSTICAL LAG DRIVER |



**DISPLAY JARS
AVAILABLE!
Part# JAR-INS**



****05-ALD
INSERT
BIT**

SQUARE INSERT BITS

- S-2 Shock Resistant steel with HRc 60 hardness
- 1/4" Hex Shank & Sold in bags of 50

| PART # | SIZE |
|----------|-----------------------|
| 05-SQ0 | #0 x 1" Bit |
| 05-SQ1 | #1 x 1" Bit |
| 05-SQ2 | #2 x 1" Bit |
| 05-SQ3 | #3 x 1" Bit |
| 05-SQ1-2 | #1 x 2" POWER Bit |
| 05-SQ2-2 | #2 x 2" POWER Bit |
| 05-SQ3-2 | #3 x 2" POWER Bit |
| 05-SQ1-3 | #1 x 2-3/4" POWER Bit |
| 05-SQ2-3 | #2 x 2-3/4" POWER Bit |
| 05-SQ3-3 | #3 x 2-3/4" POWER Bit |
| 05-SQ1-4 | #1 x 3-1/2" POWER Bit |
| 05-SQ2-4 | #2 x 3-1/2" POWER Bit |
| 05-SQ3-4 | #3 x 3-1/2" POWER Bit |
| 05-SQ1-6 | #1 x 6" POWER Bit |
| 05-SQ2-6 | #2 x 6" POWER Bit |
| 05-SQ3-6 | #3 x 6" POWER Bit |

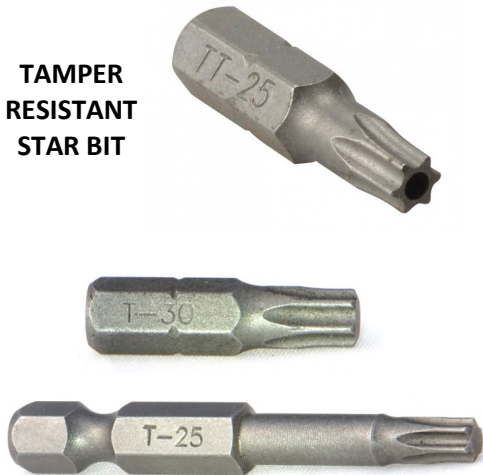


SCREWDRIVING BITS

STAR INSERT BITS

- S-2 Shock Resistant steel with HRc 60 hardness
- 1/4" Hex Shank & Sold in bags of 50
- TAMPER RESISTANT bits have a security pin hole for additional protection from unwanted tampering. Can be used as security bit tips

**TAMPER
RESISTANT
STAR BIT**



| PART # | SIZE |
|-----------|--------------------------------|
| 05-TT8 | T-8 x 1" TAMPER RESISTANT Bit |
| 05-TT8-2 | T-8 x 2" TAMPER RESISTANT Bit |
| 05-TT9 | T-9 x 1" TAMPER RESISTANT Bit |
| 05-TT10 | T-10 x 1" TAMPER RESISTANT Bit |
| 05-TT10-2 | T-10 x 2" TAMPER RESISTANT Bit |
| 05-TT15 | T-15 x 1" TAMPER RESISTANT Bit |
| 05-TT15-2 | T-15 x 2" TAMPER RESISTANT Bit |
| 05-TT20 | T-20 x 1" TAMPER RESISTANT Bit |
| 05-TT20-2 | T-20 x 2" TAMPER RESISTANT Bit |
| 05-TT25 | T-25 x 1" TAMPER RESISTANT Bit |
| 05-TT25-2 | T-25 x 2" TAMPER RESISTANT Bit |
| 05-TT27 | T-27 x 1" TAMPER RESISTANT Bit |
| 05-TT27-2 | T-27 x 2" TAMPER RESISTANT Bit |
| 05-TT30 | T-30 x 1" TAMPER RESISTANT Bit |
| 05-TT30-2 | T-30 x 2" TAMPER RESISTANT Bit |
| 05-TT40 | T-40 x 1" TAMPER RESISTANT Bit |
| 05-TT40-2 | T-40 x 2" TAMPER RESISTANT Bit |

| PART # | SIZE |
|----------|-------------------------------|
| 05-5T40 | 1-1/4" x 5/16" Shank T-40 Bit |
| 05-5T45 | 1-1/4" x 5/16" Shank T-45 Bit |
| 05-5T50 | 1-1/4" x 5/16" Shank T-50 Bit |
| 05-T8 | T-8 x 1" Bit |
| 05-T8-2 | T-8 x 2" POWER Bit |
| 05-T8-3 | T-8 x 2-3/4" POWER Bit |
| 05-T8-4 | T-8 x 3-1/2" TORX Bit |
| 05-T8-6 | T-8 x 6" TORX Bit |
| 05-T9 | T-9 x 1" Bit |
| 05-T9-2 | T-9 x 2" POWER Bit |
| 05-T10 | T-10 x 1" Bit |
| 05-T10-2 | T-10 x 2" POWER Bit |
| 05-T10-3 | T-10 x 2-3/4" POWER Bit |
| 05-T10-4 | T-10 x 3-1/2" TORX Bit |
| 05-T10-6 | T-10 x 6" TORX Bit |
| 05-T15 | T-15 x 1" Bit |
| 05-T15-2 | T-15 x 2" POWER Bit |
| 05-T15-3 | T-15 x 2-3/4" POWER Bit |
| 05-T15-4 | T-15 x 3-1/2" TORX Bit |
| 05-T15-6 | T-15 x 6" TORX Bit |
| 05-T20 | T-20 x 1" Bit |
| 05-T20-2 | T-20 x 2" POWER Bit |
| 05-T20-3 | T-20 x 2-3/4" POWER Bit |
| 05-T20-4 | T-20 x 3-1/2" TORX Bit |
| 05-T20-6 | T-20 x 6" TORX Bit |
| 05-T25 | T-25 x 1" Bit |
| 05-T25-2 | T-25 x 2" POWER Bit |
| 05-T25-3 | T-25 x 2-3/4" POWER Bit |
| 05-T25-4 | T-25 x 3-1/2" TORX Bit |
| 05-T25-6 | T-25 x 6" TORX Bit |
| 05-T27 | T-27 x 1" Bit |
| 05-T27-2 | T-27 x 2" POWER Bit |
| 05-T27-3 | T-27 x 2-3/4" POWER Bit |
| 05-T27-4 | T-27 x 3-1/2" TORX Bit |
| 05-T27-6 | T-27 x 6" TORX Bit |
| 05-T30 | T-30 x 1" Bit |
| 05-T30-2 | T-30 x 2" POWER Bit |
| 05-T30-3 | T-30 x 2-3/4" POWER Bit |
| 05-T30-4 | T-30 x 3-1/2" TORX Bit |
| 05-T30-6 | T-30 x 6" TORX Bit |
| 05-T40 | T-40 x 1" Bit |
| 05-T40-2 | T-40 x 2" POWER Bit |
| 05-T40-3 | T-40 x 2-3/4" POWER Bit |
| 05-T40-4 | T-40 x 3-1/2" TORX Bit |
| 05-T40-6 | T-40 x 6" TORX Bit |
| 05-T60 | T-60 x 1" TORX Bit |

SCREWDRIVING BITS

SLOTTED INSERT BITS

- S-2 Shock Resistant steel with HRc 60 hardness
- 1/4" Hex Shank & Sold in bags of 50



| PART# | SIZE |
|---------|-----------------------------------|
| 05-S5 | 5 mm (#4—#5) x 1" Bit |
| 05-S6 | 6 mm (#6—#8) x 1" Bit |
| 05-S7 | 7 mm (#8—#12) x 1" Bit |
| 05-S5-2 | 5 mm (#4—#5) x 2" POWER Bit |
| 05-S6-2 | 6 mm (#6—#8) x 2" POWER Bit |
| 05-S7-2 | 7 mm (#8—#12) x 2" POWER Bit |
| 05-S8 | #8 x 1-1/2" with 5/16" Hex Shank |
| 05-S10 | #10 x 1-1/2" with 5/16" Hex Shank |

SPANNER INSERT BITS

- S-2 Shock Resistant steel with HRc 60 hardness
- 1/4" Hex Shank & Sold in bags of 50



| PART# | SIZE |
|---------|--------------|
| 05-SP4 | #4 x 1" Bit |
| 05-SP6 | #6 x 1" Bit |
| 05-SP8 | #8 x 1" Bit |
| 05-SP10 | #10 x 1" Bit |
| 05-SP12 | #12 x 1" Bit |
| 05-SP14 | #14 x 1" Bit |

HEX ALLEN INSERT BITS & DIMPLE INSERT BITS

- S-2 Shock Resistant steel with HRc 60 hardness
- 1/4" Hex Shank & Sold in bags of 50

| PART# | SIZE |
|-----------|------------------------|
| 05-H116 | 1/16" x 1" Bit |
| 05-H116-2 | 1/16" x 2" POWER Bit |
| 05-H564 | 5/64" x 1" Bit |
| 05-H764 | 7/64" x 1" Bit |
| 05-H764-2 | 7/64" x 2" POWER Bit |
| 05-H18 | 1/8" x 1" Bit |
| 05-H18-2 | 1/8" x 2" POWER Bit |
| 05-H964 | 9/64" x 1" Bit |
| 05-H964-2 | 9/64" x 2" POWER Bit |
| 05-H532 | 5/32" x 1" Bit |
| 05-H532-2 | 5/32" x 2" POWER Bit |
| 05-H316 | 3/16" x 1" Bit |
| 05-H316-2 | 3/16" x 2" POWER Bit |
| 05-H316-3 | 3/16" x 3" POWER Bit |
| 05-H732 | 7/32" x 1" Bit |
| 05-H14 | 1/4" x 1" Bit |
| 05-H14-2 | 1/4" x 2" POWER Bit |
| 05-DWD | 1" Dry Wall Driver Bit |
| 05-DWD-2 | 2" Dry Wall Driver Bit |



DRYWALL INDENTER ("DIMPLE") INSERT BIT features a preset depth stop collar to prevent the user from going too deep into the drywall

SCREWDRIVING BITS

MAGNETIC NUTSETTERS

- S-2 Shock Resistant steel with HRc 60 hardness
- 1/4" Hex Shank & Sold in bags of 50

| PART # | SIZE |
|------------|-----------------|
| 05-NS14 | 1/4" x 1-3/4" |
| 05-NS14-3 | 1/4" x 2-9/16" |
| 05-NS14-4 | 1/4" x 4" |
| 05-NS14-6 | 1/4" x 6" |
| 05-NS38 | 3/8" x 1-3/4" |
| 05-NS38-3 | 3/8" x 2-9/16" |
| 05-NS38-4 | 3/8" x 4" |
| 05-NS38-6 | 3/8" x 6" |
| 05-NS516 | 5/16" x 1-3/4" |
| 05-NS516-3 | 5/16" x 2-9/16" |
| 05-NS516-4 | 5/16" x 4" |
| 05-NS516-6 | 5/16" x 6" |
| 05-NS716 | 7/16" x 1-3/4" |
| 05-NS716-3 | 7/16" x 2-9/16" |
| 05-NS716-4 | 7/16" x 4" |
| 05-NS716-6 | 7/16" x 6" |
| 05-NS12 | 1/2" x 1-3/4" |
| 05-NS12-3 | 1/2" x 2-9/16" |
| 05-NS12-6 | 1/2" x 6" |



LOBULAR MAG. NUTSETTERS

- S-2 Shock Resistant steel with HRc 60 hardness
- 1/4" Hex Shank & Sold in bags of 50

| PART # | SIZE |
|-------------|-----------------|
| 05-NS14L | 1/4" x 1-3/4" |
| 05-NS14-3L | 1/4" x 2-9/16" |
| 05-NS14-4L | 1/4" x 4" |
| 05-NS14-6L | 1/4" x 6" |
| 05-NS38L | 3/8" x 1-3/4" |
| 05-NS38-3L | 3/8" x 2-9/16" |
| 05-NS38-4L | 3/8" x 4" |
| 05-NS38-6L | 3/8" x 6" |
| 05-NS516L | 5/16" x 1-3/4" |
| 05-NS516-3L | 5/16" x 2-9/16" |
| 05-NS516-4L | 5/16" x 4" |
| 05-NS516-6L | 5/16" x 6" |
| 05-NS716L | 7/16" x 1-3/4" |
| 05-NS716-3L | 7/16" x 2-9/16" |
| 05-NS716-4L | 7/16" x 4" |
| 05-NS716-6L | 7/16" x 6" |
| 05-NS12L | 1/2" x 1-3/4" |
| 05-NS12-3L | 1/2" x 2-9/16" |
| 05-NS12-6L | 1/2" x 6" |



LOBULAR MAG. NUTSETTER
drives fasteners on the sides
to make the screw or bolt last
longer

SCREWDRIVING BITS

MAGNETIC BITHOLDERS

- S-2 Shock Resistant steel with HRc 60 hardness
- 1/4" Hex Shank & Sold in bags of 50

| PART # | SIZE |
|------------|--|
| 05-BH2 | 2" Stainless Steel Bit Holder w/Ring |
| 05-BH238S | 2-3/8" Stainless Steel Bit Holder |
| 05-BH238 | 2-3/8" Chrome Vanadium Bit Holder |
| 05-BH3 | 3" Stainless Steel Bit Holder w/Ring |
| 05-BH3C | 3" Stainless Steel Bit Holder w/Cap |
| 05-BH238PQ | 2-3/8" S.S. Bit Holder with Quick Change |
| 05-BH3PQ | 3" S.S. Bit Holder with Quick Change |
| 05-BH4 | 4" Stainless Steel Bit Holder w/Ring |
| 05-BH6 | 6" Stainless Steel Bit Holder w/Ring |
| 05-BH6C | 6" Stainless Steel Bit Holder w/Cap |
| 05-BH8 | 8" Stainless Steel Bit Holder w/Ring |
| 05-BH8C | 8" Stainless Steel Bit Holder w/Cap |
| 05-BH10 | 10" Stainless Steel Bit Holder w/Ring |
| 05-BH10C | 10" Stainless Steel Bit Holder w/Cap |
| 05-BH12 | 12" Stainless Steel Bit Holder w/Ring |
| 05-BH12C | 12" Stainless Steel Bit Holder w/Cap |
| 05-PQ6 | 12" S.S. Bit Holder with Quick Change |
| 05-PQ12 | 6" S.S. Bit Holder with Quick Change |

- Guides screws and fasteners in place as they are driven



With CAP



With RING



QUICK CHANGE BIT HOLDER

POSIDRIV INSERT BITS

- S-2 Shock Resistant steel with HRc 60 hardness
- 1/4" Hex Shank & Sold in bags of 50

| PART # | SIZE |
|----------|-------------------|
| 05-PZ1 | #1 x 1" Bit |
| 05-PZ2 | #2 x 1" Bit |
| 05-PZ3 | #3 x 1" Bit |
| 05-PZ1-2 | #1 x 2" POWER Bit |
| 05-PZ2-2 | #2 x 2" POWER Bit |
| 05-PZ3-2 | #3 x 2" POWER Bit |



*Posidriv is a registered trademark

PRO-EDGE

Pro-Edge Industries, Inc.
13168 Flores Street
Santa Fe Springs, CA 90670

Tel: (562) 906-0626
Order Toll Free: (800) 455-0032
Fax: (800) 906-2022
Email: proedgeind@yahoo.com
www.proedgeind.com